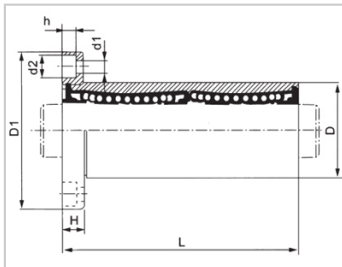
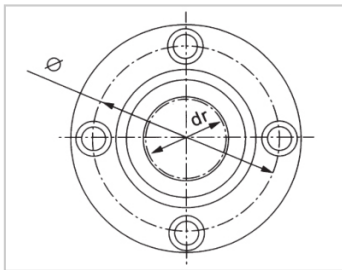
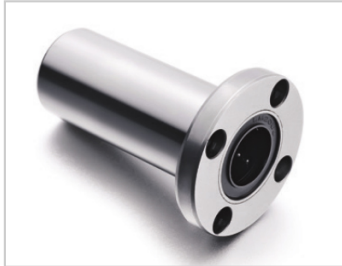


Medium Bearing Series

LMF RUU-LMF6RUULHFRD6LMF01-d6

参数信息:



Model No. :

YTP :	LMF6RU U
MISUMI :	LHFRD6
YHDA :	LMF01-d6

NUMBER OF BALL
ROWS :

Column :	4
----------	---

Boundary
dimensions :

INSCRIBED CIRCLE DIAMETER d_r :	6
INSCRIBED CIRCLE DIAMETER TOLERANCE :	0-0.010
OUTER DIAMETER D :	12
Outer DiameterTolerance :	0-0.013
Length L :	29
LengthTolerance :	± 0.3
Flange D_1 :	28
Flange H :	5
Flange :	20
HOLE FOR ATTACHMENT d_1 :	3.5
HOLE FOR ATTACHMENT d_2 :	6
HOLE FOR ATTACHMENT h :	3.1
SOUAR- ENESS :	0.015
Eccentricity (MAX.) :	0.015

Basic Load Rating :

--	--

C(kgf) :	22.6
Co(kgf) :	31
Weight :	
(g) :	27

介绍:

Model No.	Production Standards	Outer Coving			Balls		Retainer		Seals Material	
		Material	Hardness (HRC)	Treatment Of Surfaces	Material	Hardness (HRC)	Material	Holder Working Temperature	Skeleton	Rubber
LMF NUU	GB/T16940-2012	GCr15	60 ~ 64	-	GCr15	61 ~ 66	Resin	-20 ~ 80	65Mn	Nitrile Rubber
LMF NAUU	GB/T16940-2012	GCr15	60 ~ 64	Electroless Nickel Plating	GCr15	61 ~ 66	Resin	-20 ~ 80	65Mn	Nitrile Rubber