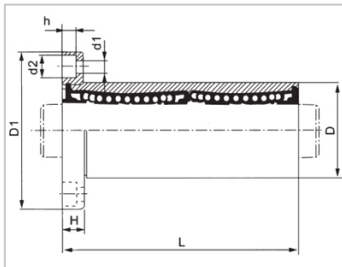
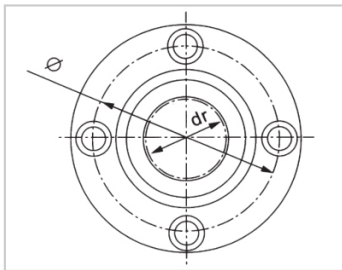


Medium Bearing Series

LMF RUU-LMF10RUULHFRD10LMF01-d10

参数信息:



Model No. :

YTP :	LMF10RU U
MISUMI :	LHFRD10
YHDA :	LMF01-d1 0

NUMBER OF BALL  
ROWS :

Column :	4
----------	---

Boundary  
dimensions :

INSCRIBED CIRCLE DIAMETER<math>d_r</math> :	10
INSCRIBED CIRCLE DIAMETER TOLERANCE :	0-0.010
OUTER DIAMETER<math>D</math> :	19
Outer DiameterTolerance :	0-0.016
Length<math>L</math> :	47
LengthTolerance :	$\pm 0.3$
Flange<math>D_1</math> :	40
Flange<math>H</math> :	6
Flange :	29
HOLE FOR ATTACHMENT<math>d_1</math> :	4.5
HOLE FOR ATTACHMENT<math>d_2</math> :	7.5
HOLE FOR ATTACHMENT<math>h</math> :	4.1
SOUAR- ENESS :	0.015
Eccentricity (MAX.) :	0.015

Basic Load Rating :

C(kgf) : 50.8

Co(kgf) : 71.8

Weight :

(g) : 85

介绍:

Model No.	Production Standards	Outer Coving			Balls		Retainer		Seals Material	
		Material	Hardness ( HRC )	Treatment Of Surfaces	Material	Hardness ( HRC )	Material	Holder Working Temperature	Skeleton	Rubber
LMF NUU	GB/T16940-2012	GCr15	60 ~ 64	-	GCr15	61 ~ 66	Resin	-20 ~ 80	65Mn	Nitrile Rubber
LMF NAUU	GB/T16940-2012	GCr15	60 ~ 64	Electroless Nickel Plating	GCr15	61 ~ 66	Resin	-20 ~ 80	65Mn	Nitrile Rubber