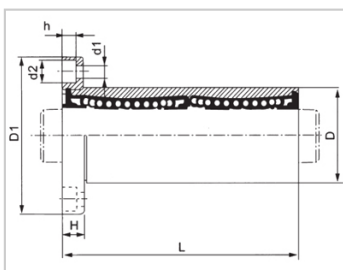
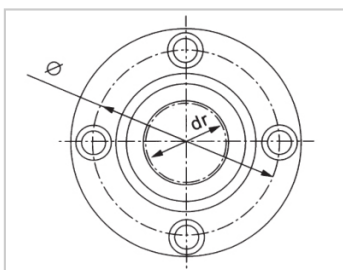


Medium Bearing Series

LMF RUU-LMF12RUULHFRD12LMF01-d12

参数信息:



Model No. :

YTP :	LMF12RU U
MISUMI :	LHFRD12
YHDA :	LMF01-d1 2

NUMBER OF BALL
ROWS :

Column :	4
----------	---

Boundary
dimensions :

INSCRIBED CIRCLE DIAMETER d_r :	12
INSCRIBED CIRCLE DIAMETER TOLERANCE :	0-0.010
OUTER DIAMETER D :	21
Outer DiameterTolerance :	0-0.016
Length L :	47
LengthTolerance :	± 0.3
Flange D_1 :	42
Flange H :	6
Flange :	32
HOLE FOR ATTACHMENT d_1 :	4.5
HOLE FOR ATTACHMENT d_2 :	7.5
HOLE FOR ATTACHMENT h :	4.1
SOUAR- ENESS :	0.015
Eccentricity (MAX.) :	0.015

Basic Load Rating :

C(kgf) : 63.5

Co(kgf) : 81.5

Weight :

(g) : 89

介绍:

Model No.	Production Standards	Outer Coving			Balls		Retainer		Seals Material	
		Material	Hardness (HRC)	Treatment Of Surfaces	Material	Hardness (HRC)	Material	Holder Working Temperature	Skeleton	Rubber
LMF NUU	GB/T169 40-2012	GCr15	60 ~ 64	-	GCr15	61 ~ 66	Resin	-20 ~ 80	65Mn	Nitrile Rubber
LMF NAUU	GB/T169 40-2012	GCr15	60 ~ 64	Electroless Nickel Plating	GCr15	61 ~ 66	Resin	-20 ~ 80	65Mn	Nitrile Rubber