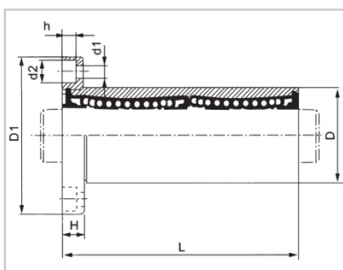
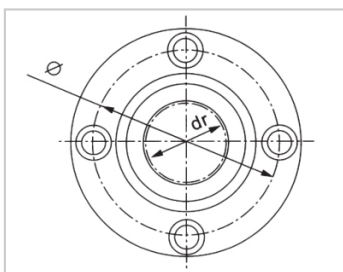


Medium Bearing Series

LMF RUU-LMF16RUULHFRD16LMF01-d16

参数信息:



Model No. :

YTP :	LMF16RU U
MISUMI :	LHFRD16
YHDA :	LMF01-d1 6

NUMBER OF BALL
ROWS :

Column :	5
----------	---

Boundary
dimensions :

INSCRIBED CIRCLE DIAMETERdr :	16
INSCRIBED CIRCLE DIAMETER TOLERANCE :	0-0.010
OUTER DIAMETERD :	28
Outer DiameterTolerance :	0-0.016
LengthL :	56
LengthTolerance :	± 0.3
FlangeD1 :	48
FlangeH :	6
Flange :	38
HOLE FOR ATTACHMENTd1 :	4.5
HOLE FOR ATTACHMENTd2 :	7.5
HOLE FOR ATTACHMENTh :	4.1
SOUAR- ENESS :	0.015
Eccentricity (MAX.) :	0.015

Basic Load Rating :

C(kgf) : 116.5

Co(kgf) : 144.8

Weight :

(g) : 157

介绍:

Model No.	Producti on Standards	Outer Coving			Balls		Retainer		Seals Material	
		Material	Hardness (HRC)	Treatmen t Of Surfaces	Material	Hardness (HRC)	Material	Holder Working Temperature	Skeleton	Rubber
LMF NUU	GB/T169 40-2012	GCr15	60 ~ 64	-	GCr15	61 ~ 66	Resin	-20 ~ 80	65Mn	Nitrile Rubber
LMF NAUU	GB/T169 40-2012	GCr15	60 ~ 64	Electroless Nickel Plating	GCr15	61 ~ 66	Resin	-20 ~ 80	65Mn	Nitrile Rubber