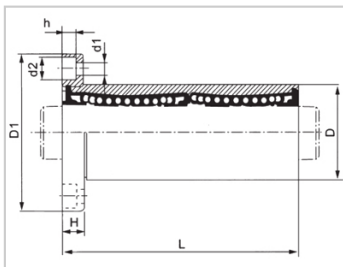
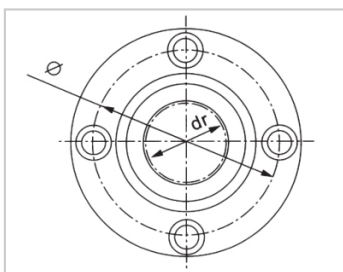


Medium Bearing Series

LMF RUU-LMF20RUULHFRD20LMF01-d20

参数信息:



Model No. :

YTP :	LMF20RU U
MISUMI :	LHFRD20
YHDA :	LMF01-d2 0

NUMBER OF BALL  
ROWS :

Column :	5
----------	---

Boundary  
dimensions :

INSCRIBED CIRCLE DIAMETERdr :	20
INSCRIBED CIRCLE DIAMETER TOLERANCE :	0-0.012
OUTER DIAMETERD :	32
Outer DiameterTolerance :	0-0.019
LengthL :	65
LengthTolerance :	± 0.3
FlangeD1 :	54
FlangeH :	8
Flange :	43
HOLE FOR ATTACHMENTd1 :	5.5
HOLE FOR ATTACHMENTd2 :	9
HOLE FOR ATTACHMENTh :	5.1
SOUAR- ENESS :	0.02
Eccentricity (MAX.) :	0.02

Basic Load Rating :

C(kgf) : 155.5

Co(kgf) : 206.8

Weight :

(g) : 232

介绍:

Model No.	Production Standards	Outer Coving			Balls		Retainer		Seals Material	
		Material	Hardness ( HRC )	Treatment Of Surfaces	Material	Hardness ( HRC )	Material	Holder Working Temperature	Skeleton	Rubber
LMF NUU	GB/T169 40-2012	GCr15	60 ~ 64	-	GCr15	61 ~ 66	Resin	-20 ~ 80	65Mn	Nitrile Rubber
LMF NAUU	GB/T169 40-2012	GCr15	60 ~ 64	Electroless Nickel Plating	GCr15	61 ~ 66	Resin	-20 ~ 80	65Mn	Nitrile Rubber