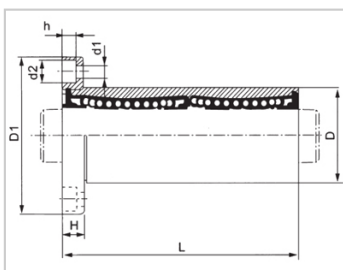
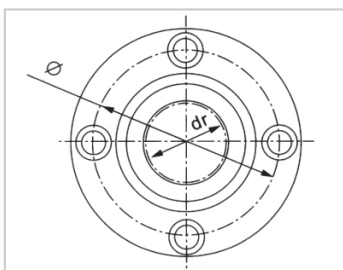


Medium Bearing Series

LMF RUU-LMF25RUULHFRD25LMF01-d25

参数信息:



Model No. :

YTP :	LMF25RU U
MISUMI :	LHFRD25
YHDA :	LMF01-d2 5

NUMBER OF BALL
ROWS :

Column :	6
----------	---

Boundary
dimensions :

INSCRIBED CIRCLE DIAMETER d_r :	25
INSCRIBED CIRCLE DIAMETER TOLERANCE :	0-0.012
OUTER DIAMETER D :	40
Outer DiameterTolerance :	0-0.019
Length L :	83
LengthTolerance :	± 0.3
Flange D_1 :	62
Flange h :	8
Flange :	51
HOLE FOR ATTACHMENT d_1 :	5.5
HOLE FOR ATTACHMENT d_2 :	9
HOLE FOR ATTACHMENT h :	5.1
SOUAR- ENESS :	0.02
Eccentricity (MAX.) :	0.02

Basic Load Rating :

C(kgf) : 172.5

Co(kgf) : 306.8

Weight :

(g) : 481

介绍:

Model No.	Production Standards	Outer Coving			Balls		Retainer		Seals Material	
		Material	Hardness (HRC)	Treatment Of Surfaces	Material	Hardness (HRC)	Material	Holder Working Temperature	Skeleton	Rubber
LMF NUU	GB/T169 40-2012	GCr15	60 ~ 64	-	GCr15	61 ~ 66	Resin	-20 ~ 80	65Mn	Nitrile Rubber
LMF NAUU	GB/T169 40-2012	GCr15	60 ~ 64	Electroless Nickel Plating	GCr15	61 ~ 66	Resin	-20 ~ 80	65Mn	Nitrile Rubber