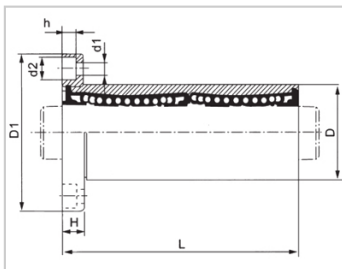
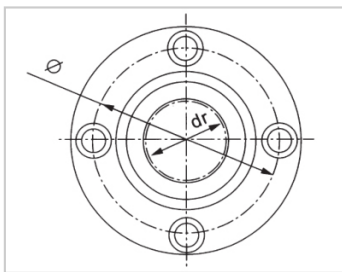


Medium Bearing Series

LMF RUU-LMF30RUULHFRD30LMF01-d30

参数信息:



Model No. :

YTP :	LMF30RU U
MISUMI :	LHFRD30
YHDA :	LMF01-d3 0

NUMBER OF BALL  
ROWS :

Column :	6
----------	---

Boundary  
dimensions :

INSCRIBED CIRCLE DIAMETERdr :	30
INSCRIBED CIRCLE DIAMETER TOLERANCE :	0-0.012
OUTER DIAMETERD :	45
Outer DiameterTolerance :	0-0.019
LengthL :	90
LengthTolerance :	± 0.3
FlangeD1 :	74
FlangeH :	10
Flange :	60
HOLE FOR ATTACHMENTd1 :	6.6
HOLE FOR ATTACHMENTd2 :	11
HOLE FOR ATTACHMENTh :	6.1
SOUAR- ENESS :	0.02
Eccentricity (MAX.) :	0.02

Basic Load Rating :

C(kgf) : 244

Co(kgf) : 397.5

Weight :

(g) : 560

介绍:

Model No.	Production Standards	Outer Coving			Balls		Retainer		Seals Material	
		Material	Hardness ( HRC )	Treatment Of Surfaces	Material	Hardness ( HRC )	Material	Holder Working Temperature	Skeleton	Rubber
LMF NUU	GB/T16940-2012	GCr15	60 ~ 64	-	GCr15	61 ~ 66	Resin	-20 ~ 80	65Mn	Nitrile Rubber
LMF NAUU	GB/T16940-2012	GCr15	60 ~ 64	Electroless Nickel Plating	GCr15	61 ~ 66	Resin	-20 ~ 80	65Mn	Nitrile Rubber