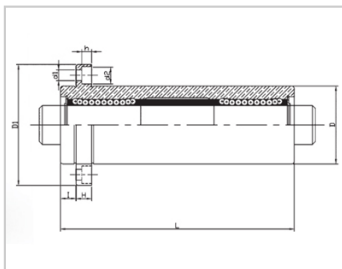
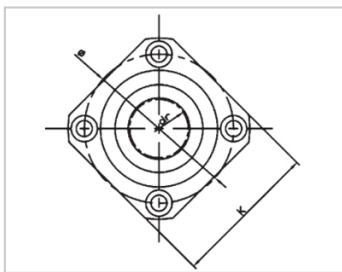
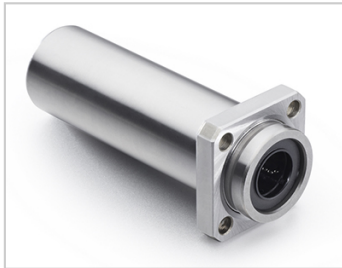


Triple lengthened bearing series

LMKP TUU-LMKP40TUU|LHKISNL40|LMR41-d40

参数信息:



Model No. :

YTP :	LMKP40T UU
MISUMI :	LHKISNL 40
YHDA :	LMR41-d 40
NUMBER OF BALL ROWS :	
Column :	6
Boundary dimensions :	
INSCRIBED CIRCLE DIAMETER _{dr} :	40
INSCRIBED CIRCLE DIAMETER TOLERANCE :	0-0.021
OUTER DIAMETER _D :	65
Outer DiameterTolerance :	-
Length _L :	230
LengthTolerance :	± 0.3
I :	13
Flange _{D1} :	101
Flange _K :	80
Flange _H :	13
Flange :	83
HOLE FOR ATTACHMENT _{d1} :	9
HOLE FOR ATTACHMENT _{d2} :	14
HOLE FOR ATTACHMENT _h :	8.1

SOUAR- ENESS :	0.03
Eccentricity (MAX.) :	0.03
Basic Load Rating :	
C(kgf) :	350
Co(kgf) :	820
Weight :	
(g) :	2510

介绍:

Model	Producti on standard	Shell			rolling ball		Retainer		Accessory (seal) material	
		Material	Hardness (HRC)	Surface treatment	Material	Hardness (HRC)	Material	Using te mperatur e	Skeleton	Rubber
LMKP TUU	GB/T169 40-2012	GCr15	60 ~ 64	-	GCr15	61 ~ 66	Resin	-20 ~ 80	65Mn	Nitrile rubber
LMKP TAUU	GB/T169 40-2012	GCr15	60 ~ 64	Electroless nickel plating	GCr15	61 ~ 66	Resin	-20 ~ 80	65Mn	Nitrile rubber
LMKP TM	GB/T169 40-2012	GCr15	60 ~ 64	-	GCr15	61 ~ 66	304 stainless steel	-20 ~ 80	65Mn	-
LMKP TAM	GB/T169 40-2012	GCr15	60 ~ 64	Electroless nickel plating	GCr15	61 ~ 66	304 stainless steel	-20 ~ 80	65Mn	-

Note: The inner holes are 6, 8, 10, 13, 35, 40, not produced, for reference only.