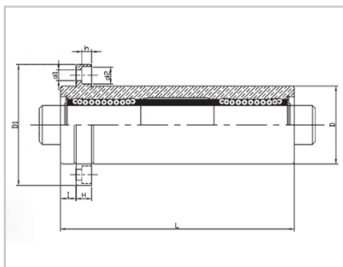
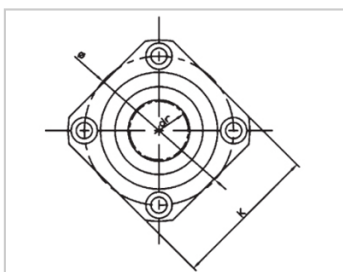


Triple lengthened bearing series

LMKP TUU-LMKP8TUULHKKISNL8LMR41-d8

参数信息:



Model No. :

YTP :	LMKP8T UU
MISUMI :	LHKISNL 8
YHDA :	LMR41-d 8

NUMBER OF BALL
ROWS :

Column :	4
----------	---

Boundary
dimensions :

INSCRIBED CIRCLE DIAMETER _{dr} :	8
INSCRIBED CIRCLE DIAMETER TOLERANCE :	0-0.012
OUTER DIAMETER _D :	19
Outer DiameterTolerance :	0-0.016
Length _L :	68
LengthTolerance :	± 0.3
I :	6
Flange _{D1} :	40
Flange _K :	30
Flange _H :	6
Flange :	29
HOLE FOR ATTACHMENT _{d1} :	4.5
HOLE FOR ATTACHMENT _{d2} :	7.5
HOLE FOR ATTACHMENT _h :	4.1

SOUAR- ENESS :	0.02
Eccentricity (MAX.) :	0.02
Basic Load Rating :	
C(kgf) :	44
Co(kgf) :	80
Weight :	
(g) :	117

介绍:

Model	Producti on standard	Shell			rolling ball		Retainer		Accessory (seal) material	
		Material	Hardness (HRC)	Surface treatment	Material	Hardness (HRC)	Material	Using te mperatur e	Skeleton	Rubber
LMKP TUU	GB/T169 40-2012	GCr15	60 ~ 64	-	GCr15	61 ~ 66	Resin	-20 ~ 80	65Mn	Nitrile rubber
LMKP TAUU	GB/T169 40-2012	GCr15	60 ~ 64	Electroless nickel plating	GCr15	61 ~ 66	Resin	-20 ~ 80	65Mn	Nitrile rubber
LMKP TM	GB/T169 40-2012	GCr15	60 ~ 64	-	GCr15	61 ~ 66	304 stainless steel	-20 ~ 80	65Mn	-
LMKP TAM	GB/T169 40-2012	GCr15	60 ~ 64	Electroless nickel plating	GCr15	61 ~ 66	304 stainless steel	-20 ~ 80	65Mn	-

Note: The inner holes are 6, 8, 10, 13, 35, 40, not produced, for reference only.