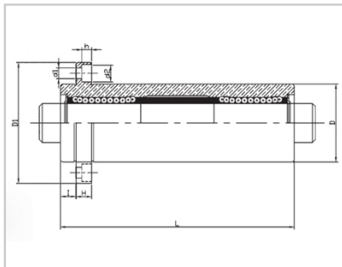
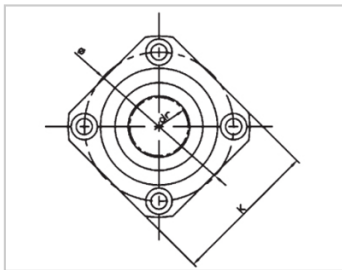
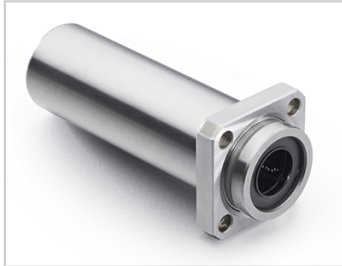


Triple lengthened bearing series

LMKP TUU-LMKP10TUU|LHKISNL10|LMR41-d10

参数信息:



Model No. :

YTP :	LMKP10T UU
MISUMI :	LHKISNL 10
YHDA :	LMR41-d 10

NUMBER OF BALL  
ROWS :

Column :	4
----------	---

Boundary  
dimensions :

INSCRIBED CIRCLE DIAMETER <sub>dr</sub> :	10
INSCRIBED CIRCLE DIAMETER TOLERANCE :	0-0.012
OUTER DIAMETER <sub>D</sub> :	23
Outer DiameterTolerance :	0-0.016
Length <sub>L</sub> :	82
LengthTolerance :	± 0.3
I :	6
Flange <sub>D1</sub> :	43
Flange <sub>K</sub> :	34
Flange <sub>H</sub> :	6
Flange :	33
HOLE FOR ATTACHMENT <sub>d1</sub> :	4.5
HOLE FOR ATTACHMENT <sub>d2</sub> :	7.5
HOLE FOR ATTACHMENT <sub>h</sub> :	4.1

SOUAR- ENESS :	0.02
Eccentricity (MAX.) :	0.02
Basic Load Rating :	
C(kgf) :	60
Co(kgf) :	112
Weight :	
(g) :	189

介绍:

Model	Producti on standard	Shell			rolling ball		Retainer		Accessory (seal) material	
		Material	Hardness (HRC)	Surface treatment	Material	Hardness (HRC)	Material	Using te mperatur e	Skeleton	Rubber
LMKP TUU	GB/T169 40-2012	GCr15	60 ~ 64	-	GCr15	61 ~ 66	Resin	-20 ~ 80	65Mn	Nitrile rubber
LMKP TAUU	GB/T169 40-2012	GCr15	60 ~ 64	Electroless nickel plating	GCr15	61 ~ 66	Resin	-20 ~ 80	65Mn	Nitrile rubber
LMKP TM	GB/T169 40-2012	GCr15	60 ~ 64	-	GCr15	61 ~ 66	304 stainless steel	-20 ~ 80	65Mn	-
LMKP TAM	GB/T169 40-2012	GCr15	60 ~ 64	Electroless nickel plating	GCr15	61 ~ 66	304 stainless steel	-20 ~ 80	65Mn	-

Note: The inner holes are 6, 8, 10, 13, 35, 40, not produced, for reference only.