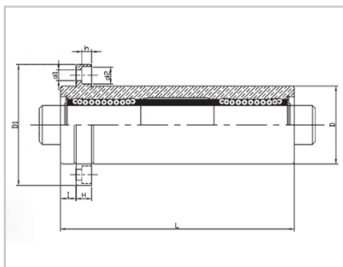
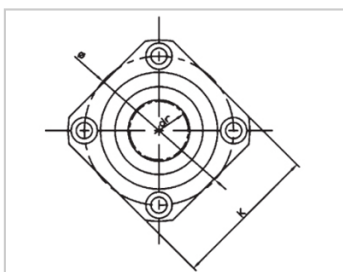


Triple lengthened bearing series

LMKP TUU-LMKP25TUU|LHKISNL25|LMR41-d25

参数信息:



Model No. :

YTP :	LMKP25T UU
MISUMI :	LHKISNL 25
YHDA :	LMR41-d 25
NUMBER OF BALL ROWS :	
Column :	6
Boundary dimensions :	
INSCRIBED CIRCLE DIAMETER _{dr} :	25
INSCRIBED CIRCLE DIAMETER TOLERANCE :	0-0.018
OUTER DIAMETER _D :	45
Outer DiameterTolerance :	0-0.019
Length _L :	167
LengthTolerance :	± 0.3
I :	10
Flange _{D1} :	74
Flange _K :	58
Flange _H :	10
Flange :	60
HOLE FOR ATTACHMENT _{d1} :	6.6
HOLE FOR ATTACHMENT _{d2} :	11
HOLE FOR ATTACHMENT _h :	6.1

SOUAR- ENESS :	0.025
Eccentricity (MAX.) :	0.025
Basic Load Rating :	
C(kgf) :	159
Co(kgf) :	320
Weight :	
(g) :	1163

介绍:

Model	Producti on standard	Shell			rolling ball		Retainer		Accessory (seal) material	
		Material	Hardness (HRC)	Surface treatment	Material	Hardness (HRC)	Material	Using te mperatur e	Skeleton	Rubber
LMKP TUU	GB/T169 40-2012	GCr15	60 ~ 64	-	GCr15	61 ~ 66	Resin	-20 ~ 80	65Mn	Nitrile rubber
LMKP TAUU	GB/T169 40-2012	GCr15	60 ~ 64	Electroless nickel plating	GCr15	61 ~ 66	Resin	-20 ~ 80	65Mn	Nitrile rubber
LMKP TM	GB/T169 40-2012	GCr15	60 ~ 64	-	GCr15	61 ~ 66	304 stainless steel	-20 ~ 80	65Mn	-
LMKP TAM	GB/T169 40-2012	GCr15	60 ~ 64	Electroless nickel plating	GCr15	61 ~ 66	304 stainless steel	-20 ~ 80	65Mn	-

Note: The inner holes are 6, 8, 10, 13, 35, 40, not produced, for reference only.