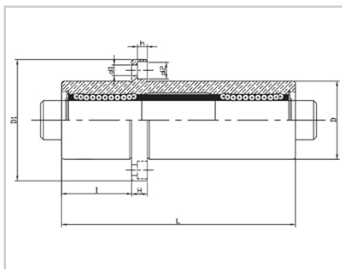
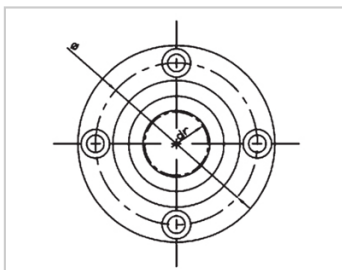
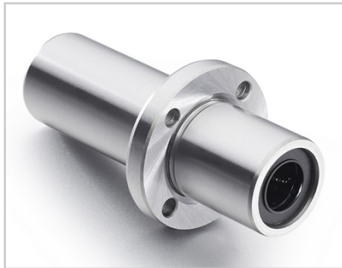


Triple lengthened bearing series

LMFC TUU-LMFC6TUULHKMRNL6LMR61-d6

参数信息:



Model No. :

YTP :	LMFC6T UU
MISUMI :	LHKMR NL6
YHDA :	LMR61-d 6

NUMBER OF BALL  
ROWS :

Column :	4
----------	---

Boundary  
dimensions :

INSCRIBED CIRCLE DIAMETER <sub>dr</sub> :	6
INSCRIBED CIRCLE DIAMETER TOLERANCE :	0-0.012
OUTER DIAMETER <sub>D</sub> :	15
Outer DiameterTolerance :	0-0.013
Length <sub>L</sub> :	49
LengthTolerance :	± 0.3
I :	17
Flange <sub>D1</sub> :	32
Flange <sub>H</sub> :	5
Flange :	24
HOLE FOR ATTACHMENT <sub>d1</sub> :	3.5
HOLE FOR ATTACHMENT <sub>d2</sub> :	6
HOLE FOR ATTACHMENT <sub>h</sub> :	3.1
SOUAR- ENESS :	0.02

Eccentricity (MAX.) : 0.02

Basic Load Rating :

C(kgf) : 33

Co(kgf) : 54

Weight :

(g) : 66

介绍:

Model	Producti on standard	Shell			rolling ball		Retainer		Accessory (seal) material	
		Material	Hardness (HRC)	Surface treatment	Material	Hardness (HRC)	Material	Using te mperatur e	Skeleton	Rubber
LMFC TUU	GB/T169 40-2012	GCr15	60 ~ 64	-	GCr15	61 ~ 66	Resin	-20 ~ 80	65Mn	Nitrile rubber
LMFC TAUU	GB/T169 40-2012	GCr15	60 ~ 64	Electroless nickel plating	GCr15	61 ~ 66	Resin	-20 ~ 80	65Mn	Nitrile rubber
LMFC TM	GB/T169 40-2012	GCr15	60 ~ 64	-	GCr15	61 ~ 66	304 stainless steel	-20 ~ 80	65Mn	-
LMFC TAM	GB/T169 40-2012	GCr15	60 ~ 64	Electroless nickel plating	GCr15	61 ~ 66	304 stainless steel	-20 ~ 80	65Mn	-

Note: The inner holes are 6, 8, 10, 13, 35, 40, not produced, for reference only.