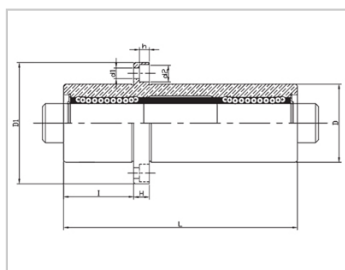
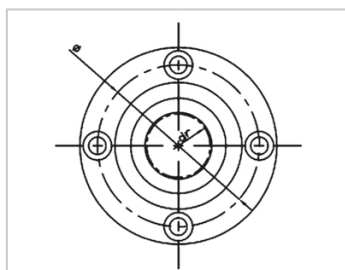


Triple lengthened bearing series

LMFC TUU-LMFC40TUULHKMRNL40LMR61-d40

参数信息:



Model No. :

YTP :	LMFC40T UU
MISUMI :	LHKMR NL40
YHDA :	LMR61-d 40

NUMBER OF BALL  
ROWS :

Column :	6
----------	---

Boundary  
dimensions :

INSCRIBED CIRCLE DIAMETER <sub>dr</sub> :	40
INSCRIBED CIRCLE DIAMETER TOLERANCE :	0-0.021
OUTER DIAMETER <sub>D</sub> :	65
Outer DiameterTolerance :	-
Length <sub>L</sub> :	230
LengthTolerance :	± 0.3
I :	77
Flange <sub>D1</sub> :	101
Flange <sub>H</sub> :	13
Flange :	83
HOLE FOR ATTACHMENT <sub>d1</sub> :	9
HOLE FOR ATTACHMENT <sub>d2</sub> :	14
HOLE FOR ATTACHMENT <sub>h</sub> :	8.1
SOUAR- ENESS :	0.03

Eccentricity (MAX.) : 0.03

Basic Load Rating :

C(kgf) : 350

Co(kgf) : 820

Weight :

(g) : 2950

介绍:

Model	Producti on standard	Shell			rolling ball		Retainer		Accessory (seal) material		
		Material	Hardness (HRC)	Surface treatment	Material	Hardness (HRC)	Material	Using te mperatur e	Skeleton	Rubber	
LMFC TUU	GB/T169 40-2012	GCr15	60 ~ 64	-	GCr15	61 ~ 66	Resin	-20 ~ 80	65Mn	Nitrile rubber	
LMFC TAUU	GB/T169 40-2012	GCr15	60 ~ 64	Electroless nickel plating	GCr15	61 ~ 66	Resin	-20 ~ 80	65Mn	Nitrile rubber	
LMFC TM	GB/T169 40-2012	GCr15	60 ~ 64	-	GCr15	61 ~ 66	304 stainless steel	-20 ~ 80	65Mn	-	
LMFC TAM	GB/T169 40-2012	GCr15	60 ~ 64	Electroless nickel plating	GCr15	61 ~ 66	304 stainless steel	-20 ~ 80	65Mn	-	

Note: The inner holes are 6, 8, 10, 13, 35, 40, not produced, for reference only.