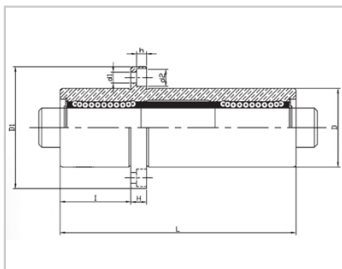
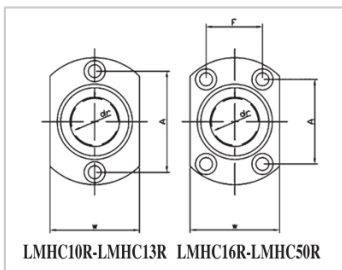
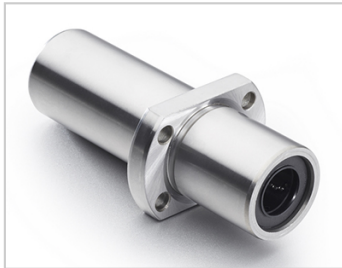


Triple lengthened bearing series

LMHC TUU-LMHC8TUULHKMCNL8LMR81-d8

参数信息:



Model No. :

YTP :	LMHC8T UU
MISUMI :	LHKMC NL8
YHDA :	LMR81-d 8

NUMBER OF BALL  
ROWS :

Column :	4
----------	---

Boundary  
dimensions :

INSCRIBED CIRCLE DIAMETER <sub>dr</sub> :	8
INSCRIBED CIRCLE DIAMETER TOLERANCE :	0-0.012
OUTER DIAMETER <sub>D</sub> :	19
Outer DiameterTolerance :	0-0.016
Length <sub>L</sub> :	68
LengthTolerance :	± 0.3
I :	22
Flange <sub>D1</sub> :	40
Flange <sub>W</sub> :	25
Flange <sub>H</sub> :	6
Flange <sub>A</sub> :	-
Flange <sub>F</sub> :	-
HOLE FOR ATTACHMENT <sub>d1</sub> :	4.5
HOLE FOR ATTACHMENT <sub>d2</sub> :	7.5
HOLE FOR	4.1

ATTACHMENTh :

SOUAR- ENESS : 0.02

Eccentricity (MAX.) : 0.02

Basic Load Rating :

C(kgf) : 44

Co(kgf) : 80

Weight :

(g) : -

介绍:

Model	Producti on standard	Shell			rolling ball		Retainer		Accessory (seal) material		
		Material	Hardness (HRC)	Surface treatment	Material	Hardness (HRC)	Material	Using te mperatur e	Skeleton	Rubber	
LMHC TUU	GB/T169 40-2012	GCr15	60 ~ 64	-	GCr15	61 ~ 66	Resin	-20 ~ 80	65Mn	Nitrile rubber	
LMHC TAUU	GB/T169 40-2012	GCr15	60 ~ 64	Electroless nickel plating	GCr15	61 ~ 66	Resin	-20 ~ 80	65Mn	Nitrile rubber	
LMHC TM	GB/T169 40-2012	GCr15	60 ~ 64	-	GCr15	61 ~ 66	304 stainless steel	-20 ~ 80	65Mn	-	
LMHC TAM	GB/T169 40-2012	GCr15	60 ~ 64	Electroless nickel plating	GCr15	61 ~ 66	304 stainless steel	-20 ~ 80	65Mn	-	

Note: The inner holes are 6, 8, 10, 13, 35, 40, not produced, for reference only.