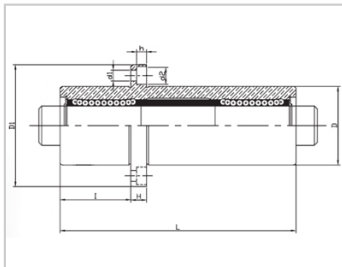
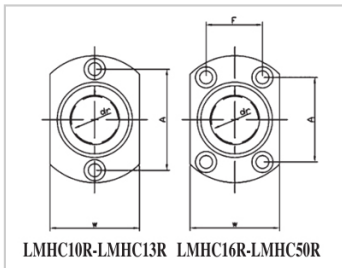
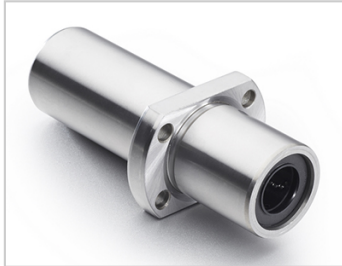


Triple lengthened bearing series

LMHC TUU-LMHC13TUULHKMCNL13LMR81-d13

参数信息:



Model No. :

YTP :	LMHC13 TUU
MISUMI :	LHKMC NL13
YHDA :	LMR81-d 13

NUMBER OF BALL
ROWS :

Column :	4
----------	---

Boundary
dimensions :

INSCRIBED CIRCLE DIAMETER _{dr} :	13
INSCRIBED CIRCLE DIAMETER TOLERANCE :	0-0.015
OUTER DIAMETER _D :	28
Outer DiameterTolerance :	0-0.016
Length _L :	92
LengthTolerance :	± 0.3
I :	30
Flange _{D1} :	48
Flange _W :	34
Flange _H :	6
Flange _A :	-
Flange _F :	-
HOLE FOR ATTACHMENT _{d1} :	4.5
HOLE FOR ATTACHMENT _{d2} :	7.5
HOLE FOR	4.1

ATTACHMENTh :

SOUAR- ENESS : 0.02

Eccentricity (MAX.) : 0.02

Basic Load Rating :

C(kgf) : 83

Co(kgf) : 160

Weight :

(g) : -

介绍:

Model	Producti on standard	Shell			rolling ball		Retainer		Accessory (seal) material		
		Material	Hardness (HRC)	Surface treatment	Material	Hardness (HRC)	Material	Using te mperatur e	Skeleton	Rubber	
LMHC TUU	GB/T169 40-2012	GCr15	60 ~ 64	-	GCr15	61 ~ 66	Resin	-20 ~ 80	65Mn	Nitrile rubber	
LMHC TAUU	GB/T169 40-2012	GCr15	60 ~ 64	Electroless nickel plating	GCr15	61 ~ 66	Resin	-20 ~ 80	65Mn	Nitrile rubber	
LMHC TM	GB/T169 40-2012	GCr15	60 ~ 64	-	GCr15	61 ~ 66	304 stainless steel	-20 ~ 80	65Mn	-	
LMHC TAM	GB/T169 40-2012	GCr15	60 ~ 64	Electroless nickel plating	GCr15	61 ~ 66	304 stainless steel	-20 ~ 80	65Mn	-	

Note: The inner holes are 6, 8, 10, 13, 35, 40, not produced, for reference only.