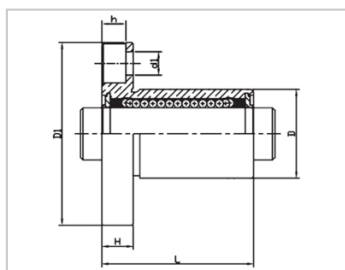
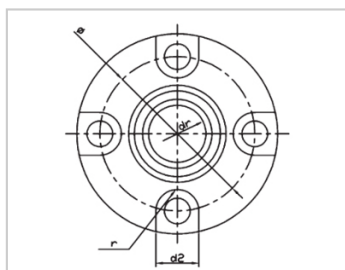


Compact bearing series

LMCF UU-LMCF6UULHRK6LME52-d6

参数信息:



Model No. :

YTP :	LMCF6U U
MISUMI :	LHRK6
YHDA :	LME52-d 6

NUMBER OF BALL
ROWS :

Column :	6
----------	---

Boundary
dimensions :

INSCRIBED CIRCLE DIAMETERd _r :	6
INSCRIBED CIRCLE DIAMETER TOLERANCE :	0-0.009
OUTER DIAMETERD :	10
Outer DiameterTolerance :	0-0.011
LengthL :	19
LengthTolerance :	± 0.3
FlangeD ₁ :	25
FlangeH :	5
Flange :	19
HOLE FOR ATTACHMENTd ₁ :	3.5
HOLE FOR ATTACHMENTd ₂ :	6
HOLE FOR ATTACHMENTh :	3.1
HOLE FOR ATTACHMENTr :	3
SOUAR- ENESS :	0.012

Eccentricity (MAX.) : 0.012

Basic Load Rating :

C(kgf) : 13

Co(kgf) : 15.5

Weight :

(g) : 18

介绍:

Model No.	Production Standards	Outer Coving			Balls		Retainer		Seals Material	
		Material	Hardness (HRC)	Treatment Of Surfaces	Material	Hardness (HRC)	Material	Holder Working Temperature	Skeleton	Rubber
LMCF UU	GB/T169 40-2012	GCr15	60 ~ 64	-	GCr15	61 ~ 66	Resin	-20 ~ 80	65Mn	Nitrile Rubber
LMCF AUU	GB/T169 40-2012	GCr15	60 ~ 64	Electroless Nickel Plating	GCr15	61 ~ 66	Resin	-20 ~ 80	65Mn	Nitrile Rubber

Note: Not produced, for reference only.