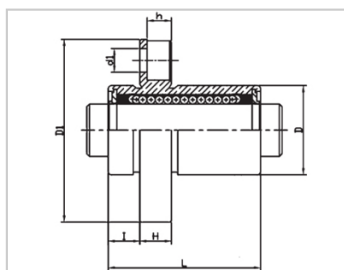
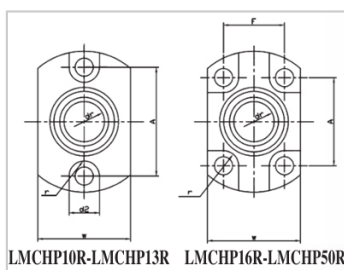


Compact bearing series

LMCHP UU-LMCHP8UULHICK8LMJ72-d8

参数信息:



Model No. :

YTP :	LMCHP8 UU
MISUMI :	LHICK8
YHDA :	LMJ72-d8

NUMBER OF BALL
ROWS :

Column :	6
----------	---

Boundary
dimensions :

INSCRIBED CIRCLE DIAMETER _{dr} :	8
INSCRIBED CIRCLE DIAMETER TOLERANCE :	0-0.009
OUTER DIAMETER _D :	13
Outer DiameterTolerance :	0-0.013
Length _L :	24
LengthTolerance :	± 0.3
I :	5
Flange _{D1} :	28
Flange _W :	19
Flange _H :	5
Flange _A :	22
Flange _F :	-
HOLE FOR ATTACHMENT _{d1} :	3.5
HOLE FOR ATTACHMENT _{d2} :	6
HOLE FOR ATTACHMENT _h :	3.1

HOLE FOR ATTACHMENTr :	3
SOUAR- ENESS :	0.012
Eccentricity (MAX.) :	0.012
Basic Load Rating :	
C(kgf) :	23.5
Co(kgf) :	27.7
Weight :	
(g) :	24

介绍:

Model No.	Production Standards	Outer Coving			Balls		Retainer		Seals Material	
		Material	Hardness (HRC)	Treatment Of Surfaces	Material	Hardness (HRC)	Material	Holder Working Temperature	Skeleton	Rubber
LMCHP UU	GB/T169 40-2012	GCr15	60 ~ 64	-	GCr15	61 ~ 66	Resin	-20 ~ 80	65Mn	Nitrile Rubber
LMCHP AUU	GB/T169 40-2012	GCr15	60 ~ 64	Electroless Nickel Plating	GCr15	61 ~ 66	Resin	-20 ~ 80	65Mn	Nitrile Rubber

Note: Not produced, for reference only.