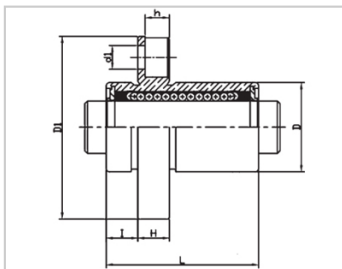
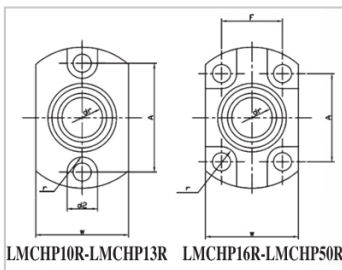
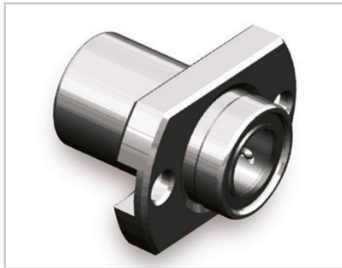


Compact bearing series

LMCHP UU-LMCHP12UULHICK12LMJ72-d12

参数信息:



Model No. :

YTP :	LMCHP1 2UU
MISUMI :	LHICK12
YHDA :	LMJ72-d1 2

NUMBER OF BALL  
ROWS :

Column :	6
----------	---

Boundary  
dimensions :

INSCRIBED CIRCLE DIAMETER <sub>dr</sub> :	12
INSCRIBED CIRCLE DIAMETER TOLERANCE :	0-0.009
OUTER DIAMETER <sub>D</sub> :	19
Outer DiameterTolerance :	0-0.016
Length <sub>L</sub> :	30
LengthTolerance :	± 0.3
I :	6
Flange <sub>D1</sub> :	38
Flange <sub>W</sub> :	25
Flange <sub>H</sub> :	6
Flange <sub>A</sub> :	30
Flange <sub>F</sub> :	-
HOLE FOR ATTACHMENT <sub>d1</sub> :	4.5
HOLE FOR ATTACHMENT <sub>d2</sub> :	7.5
HOLE FOR ATTACHMENT <sub>h</sub> :	4.1

HOLE FOR ATTACHMENTr :	3.75
SOUAR- ENESS :	0.012
Eccentricity (MAX.) :	0.012
Basic Load Rating :	
C(kgf) :	38
Co(kgf) :	44.9
Weight :	
(g) :	55

介绍:

Model No.	Producti on Standards	Outer Coving			Balls		Retainer		Seals Material	
		Material	Hardness ( HRC )	Treatmen t Of Surfaces	Material	Hardness ( HRC )	Material	Holder Working Temperature	Skeleton	Rubber
LMCHP UU	GB/T169 40-2012	GCr15	60 ~ 64	-	GCr15	61 ~ 66	Resin	-20 ~ 80	65Mn	Nitrile Rubber
LMCHP AUU	GB/T169 40-2012	GCr15	60 ~ 64	Electroles s Nickel Plating	GCr15	61 ~ 66	Resin	-20 ~ 80	65Mn	Nitrile Rubber

Note: Not produced, for reference only.