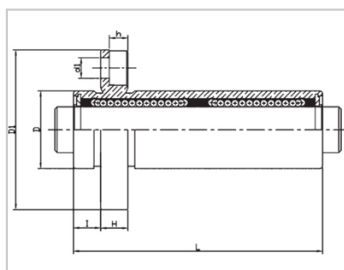
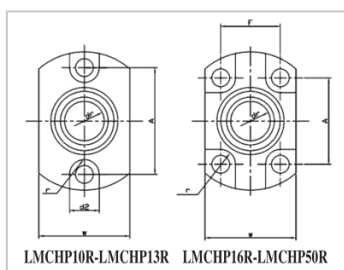


Compact bearing series

LMCHP LUU-LMCHP6LUULHICKW6LML72-d6

参数信息:



Model No. :

YTP :	LMCHP6 LUU
MISUMI :	LHICKW 6
YHDA :	LML72-d6

NUMBER OF BALL
ROWS :

Column :	6
----------	---

Boundary
dimensions :

INSCRIBED CIRCLE DIAMETER d_r :	6
INSCRIBED CIRCLE DIAMETER TOLERANCE :	0-0.010
OUTER DIAMETER D :	10
Outer DiameterTolerance :	0-0.011
Length L :	35
LengthTolerance :	± 0.3
I :	5
Flange D_1 :	25
Flange W :	16
Flange H :	5
Flange A :	19
Flange F :	-
HOLE FOR ATTACHMENT d_1 :	3.5
HOLE FOR ATTACHMENT d_2 :	6
HOLE FOR ATTACHMENT h :	3.1

HOLE FOR ATTACHMENTr :	3
SOUAR- ENESS :	0.015
Eccentricity (MAX.) :	0.015
Basic Load Rating :	
C(kgf) :	20.6
Co(kgf) :	30.9
Weight :	
(g) :	21

介绍:

Model No.	Producti on Standards	Outer Coving			Balls		Retainer		Seals Material	
		Material	Hardness (HRC)	Treatmen t Of Surfaces	Material	Hardness (HRC)	Material	Holder Working Temperature	Skeleton	Rubber
LMCHP LUU	GB/T169 40-2012	GCr15	60 ~ 64	-	GCr15	61 ~ 66	Resin	-20 ~ 80	65Mn	Nitrile Rubber
LMCHP LAUU	GB/T169 40-2012	GCr15	60 ~ 64	Electroles s Nickel Plating	GCr15	61 ~ 66	Resin	-20 ~ 80	65Mn	Nitrile Rubber

Note: Not produced, for reference only.