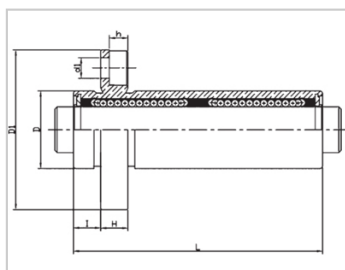
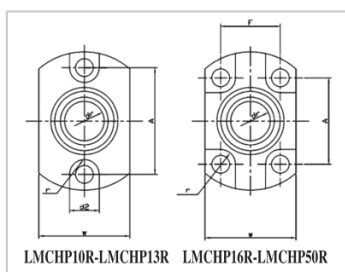


Compact bearing series

LMCHP LUU-LMCHP8LUULHICKW8LML72-d8

参数信息:



Model No. :

YTP :	LMCHP8 LUU
MISUMI :	LHICKW 8
YHDA :	LML72-d8

NUMBER OF BALL  
ROWS :

Column :	6
----------	---

Boundary  
dimensions :

INSCRIBED CIRCLE DIAMETER $d_r$ :	8
INSCRIBED CIRCLE DIAMETER TOLERANCE :	0-0.010
OUTER DIAMETER $D$ :	13
Outer DiameterTolerance :	0-0.013
Length $L$ :	45
LengthTolerance :	$\pm 0.3$
$I$ :	5
Flange $D_1$ :	28
Flange $W$ :	19
Flange $H$ :	5
Flange $A$ :	22
Flange $F$ :	-
HOLE FOR ATTACHMENT $d_1$ :	3.5
HOLE FOR ATTACHMENT $d_2$ :	6
HOLE FOR ATTACHMENT $h$ :	3.1

HOLE FOR ATTACHMENTr :	3
SOUAR- ENESS :	0.015
Eccentricity (MAX.) :	0.015
Basic Load Rating :	
C(kgf) :	38.3
Co(kgf) :	55.5
Weight :	
(g) :	35

介绍:

Model No.	Producti on Standards	Outer Coving			Balls		Retainer		Seals Material	
		Material	Hardness ( HRC )	Treatmen t Of Surfaces	Material	Hardness ( HRC )	Material	Holder Working Temperature	Skeleton	Rubber
LMCHP LUU	GB/T169 40-2012	GCr15	60 ~ 64	-	GCr15	61 ~ 66	Resin	-20 ~ 80	65Mn	Nitrile Rubber
LMCHP LAUU	GB/T169 40-2012	GCr15	60 ~ 64	Electroles s Nickel Plating	GCr15	61 ~ 66	Resin	-20 ~ 80	65Mn	Nitrile Rubber

Note: Not produced, for reference only.