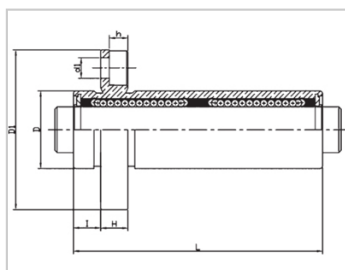
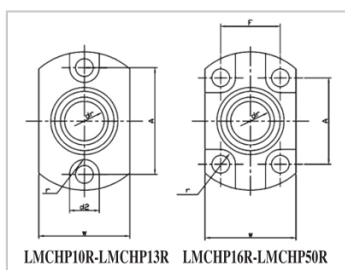


Compact bearing series

LMCHP LUU-LMCHP12LUU|LHICKW12|LML72-d12

参数信息:



Model No. :

| | |
|--|----------------|
| YTP : | LMCHP1 2LUU |
| MISUMI : | LHICKW 12 |
| YHDA : | LML72-d1 2 |
| NUMBER OF BALL ROWS : | |
| Column : | 6 |
| Boundary dimensions : | |
| INSCRIBED CIRCLE DIAMETER _{dr} : | 12 |
| INSCRIBED CIRCLE DIAMETER TOLERANCE : | 0-0.010 |
| OUTER DIAMETER _D : | 19 |
| Outer DiameterTolerance : | 0-0.016 |
| Length _L : | 57 |
| LengthTolerance : | ± 0.3 |
| I : | 6 |
| Flange _{D1} : | 38 |
| Flange _W : | 25 |
| Flange _H : | 6 |
| Flange _A : | 30 |
| Flange _F : | - |
| HOLE FOR ATTACHMENT _{d1} : | 4.5 |
| HOLE FOR ATTACHMENT _{d2} : | 7.5 |
| HOLE FOR | 4.1 |

ATTACHMENTh :

HOLE FOR
ATTACHMENTr : 3.75

SOUAR- ENESS : 0.015

Eccentricity (MAX.) : 0.015

Basic Load Rating :

C(kgf) : 60.8

Co(kgf) : 89.9

Weight :

(g) : 87

介绍:

| Model No. | Producti on Standards | Outer Coving | | | Balls | | Retainer | | Seals Material | |
|------------|-----------------------|--------------|------------------|-----------------------------|----------|------------------|----------|-----------------------------|----------------|----------------|
| | | Material | Hardness (HRC) | Treatmen t Of Surfaces | Material | Hardness (HRC) | Material | Holder Working Temperat ure | Skeleton | Rubber |
| LMCHP LUU | GB/T169 40-2012 | GCr15 | 60 ~ 64 | - | GCr15 | 61 ~ 66 | Resin | -20 ~ 80 | 65Mn | Nitrile Rubber |
| LMCHP LAUU | GB/T169 40-2012 | GCr15 | 60 ~ 64 | Electroles s Nickel Plating | GCr15 | 61 ~ 66 | Resin | -20 ~ 80 | 65Mn | Nitrile Rubber |

Note: Not produced, for reference only.