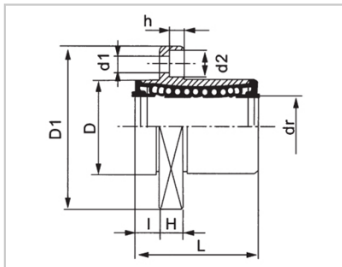
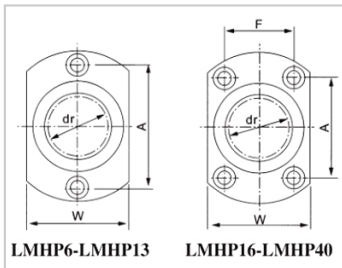
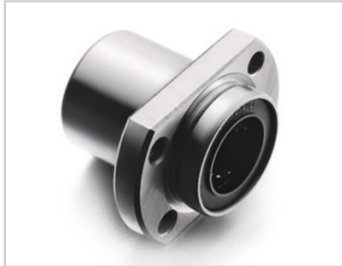


Linear flange bearing series

LMHP M- **LMHP6MLHIFCF6**

参数信息:



Model No. :

YTP (Steel Protection) :	LMHP6 M
MISUMI (Steel Insurance) :	LHIFCF6

NUMBER OF BALL ROWS :

Column :	4
----------	---

Weight :

(g) :	21
-------	----

Boundary dimensions :

INSCRIBED CIRCLE DIAMETER dr :	6
Inscribed Circle DiameterTolerance :	0 -0.009
OUTER DIAMETERD :	12
Outer DiameterTolerance :	0 -0.013
Length L :	19
LENGTH TOLERANCE :	± 0.3
I :	5
Flange D1 :	28
Flange W :	18
Flange H :	5
FLRNGE A :	20
FlangeF :	
HOLE FOR ATTACHMENT d1 :	3.5
HOLE FOR ATTACHMENT d2 :	6

HOLE FOR ATTACHMENT h :	3.1
SOUAR- ENESS :	0.012
Eccentricity (MAX.) :	0.012
Basic Load Rating :	
C(kgf) :	21
Co(kgf) :	27

介绍:

Model	Production standard	Shell			rolling ball		Retainer		Accessory (seal) material	
		Material	Hardness (HRC)	Surface treatment	Material	Hardness (HRC)	Material	Using temperature	Skeleton	Rubber
LMHP UU	GB/T16940-2012	GCr15	60 ~ 64	-	GCr15	61 ~ 66	Resin	-20 ~ 80	65Mn	Nitrile rubber
LMHP AUU	GB/T16940-2012	GCr15	60 ~ 64	Electroless nickel plating	GCr15	61 ~ 66	Resin	-20 ~ 80	65Mn	Nitrile rubber
LMHP M	GB/T16940-2012	GCr15	60 ~ 64	-	GCr15	61 ~ 66	304 stainless steel	-20 ~ 150	65Mn	-
LMHP AM	GB/T16940-2012	GCr15	60 ~ 64	Electroless nickel plating	GCr15	61 ~ 66	304 stainless steel	-20 ~ 150	65Mn	-

Note: The inner diameter 6 retainer is made of carbon steel (08F) and the inner diameter 13 is not produced, and is for reference only.