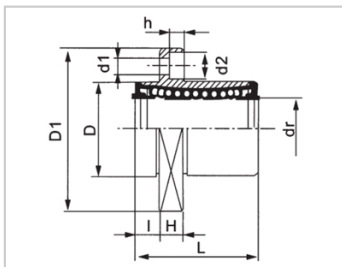
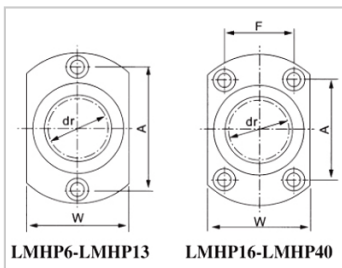
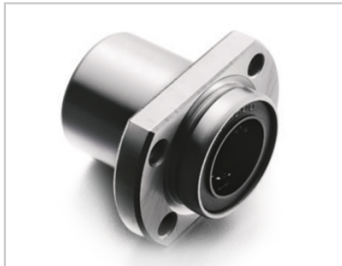


Linear flange bearing series

LMHP M-LMHP12MLHIFCF12

参数信息:



Model No. :

YTP (Steel Protection) :	LMHP12 M
MISUMI (Steel Insurance) :	LHIFCF1 2
NUMBER OF BALL ROWS :	
Column :	4
Weight :	
(g) :	68
Boundary dimensions :	
INSCRIBED CIRCLE DIAMETER dr :	12
Inscribed Circle DiameterTolerance :	0 -0.009
OUTER DIAMETERD :	21
Outer DiameterTolerance :	0 -0.016
Length L :	30
LENGTH TOLERANCE :	± 0.3
I :	6
Flange D1 :	42
Flange W :	27
Flange H :	6
FLRNGE A :	32
FlangeF :	
HOLE FOR ATTACHMENT d1 :	4.5
HOLE FOR ATTACHMENT d2 :	7.5

HOLE FOR ATTACHMENT h :	4.1
SOUAR- ENESS :	0.012
Eccentricity (MAX.) :	0.012
Basic Load Rating :	
C(kgf) :	42
Co(kgf) :	61

介绍:

Model	Production standard	Shell			rolling ball		Retainer		Accessory (seal) material	
		Material	Hardness (HRC)	Surface treatment	Material	Hardness (HRC)	Material	Using temperature	Skeleton	Rubber
LMHP UU	GB/T16940-2012	GCr15	60 ~ 64	-	GCr15	61 ~ 66	Resin	-20 ~ 80	65Mn	Nitrile rubber
LMHP AUU	GB/T16940-2012	GCr15	60 ~ 64	Electroless nickel plating	GCr15	61 ~ 66	Resin	-20 ~ 80	65Mn	Nitrile rubber
LMHP M	GB/T16940-2012	GCr15	60 ~ 64	-	GCr15	61 ~ 66	304 stainless steel	-20 ~ 150	65Mn	-
LMHP AM	GB/T16940-2012	GCr15	60 ~ 64	Electroless nickel plating	GCr15	61 ~ 66	304 stainless steel	-20 ~ 150	65Mn	-

Note: The inner diameter 6 retainer is made of carbon steel (08F) and the inner diameter 13 is not produced, and is for reference only.