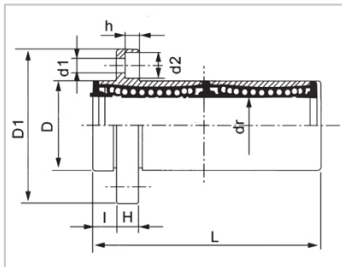
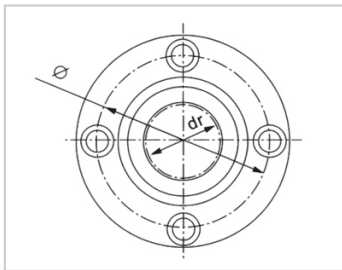


Linear flange bearing series

LMFP LAUU-LMFP50LAUULHIRWM50LML02-d50SMF50GWUU-E-SKLMFP50LUU-N

参数信息:



Model No. :

YTP (nickel plated) :	LMFP50L AUU
MISUMI (nickel plated) :	LHIRWM 50
YHDA (nickel plated) :	LML02-d5 0
NB (nickel plated) :	SMF50G WUU-E- SK
SAMICK (nickel plating) :	LMFP50L UU-N

NUMBER OF BALL ROWS :

Column :	6
----------	---

Weight :

(g) :	3600
-------	------

Boundary dimensions :

INSCRIBED CIRCLE DIAMETER d_r :	50
Inscribed Circle Diameter Tolerance :	0 -0.015
OUTER DIAMETER D :	80
Outer Diameter Tolerance :	0 -0.022
Length L :	192
LENGTH TOLERANCE :	± 0.3
I :	13
Flange D_1 :	116
Flange K :	92
Flange H :	13

Flange :	98
HOLE FOR ATTACHMENT d1 :	9
HOLE FOR ATTACHMENT d2 :	14
HOLE FOR ATTACHMENT h :	8.1
SOUAR- ENESS :	0.025
Eccentricity (MAX.) :	0.025
Basic Load Rating :	
C(kgf) :	620
Co(kgf) :	1622

介绍:

Model	Production standard	Shell			rolling ball		Retainer		Accessory (seal) material	
		Material	Hardness (HRC)	Surface treatment	Material	Hardness (HRC)	Material	Using temperature	Skeleton	Rubber
LMFP LUU	GB/T16940-2012	GCr15	60 ~ 64	-	GCr15	61 ~ 66	Resin	-20 ~ 80	65Mn	Nitrile rubber
LMFP LAUU	GB/T16940-2012	GCr15	60 ~ 64	Electroless nickel plating	GCr15	61 ~ 66	Resin	-20 ~ 80	65Mn	Nitrile rubber
LMFP LM	GB/T16940-2012	GCr15	60 ~ 64	-	GCr15	61 ~ 66	304 stainless steel	-20 ~ 150	65Mn	-
LMFP LAM	GB/T16940-2012	GCr15	60 ~ 64	Electroless nickel plating	GCr15	61 ~ 66	304 stainless steel	-20 ~ 150	65Mn	-