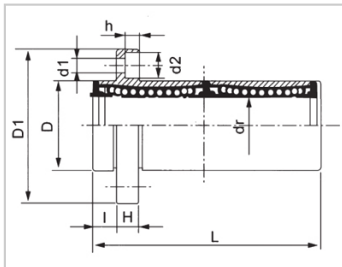
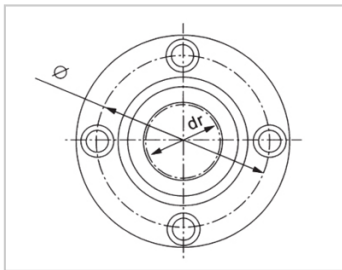
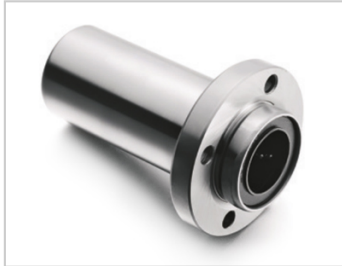


Linear flange bearing series

LMFP LAUU-LMFP60LAUULHIRWM60LML02-d60SMF60GWUU-E-SKLMFP60LUU-N

参数信息:



Model No. :

YTP (nickel plated) :	LMFP60L AUU
MISUMI (nickel plated) :	LHIRWM 60
YHDA (nickel plated) :	LML02-d6 0
NB (nickel plated) :	SMF60G WUU-E- SK
SAMICK (nickel plating) :	LMFP60L UU-N

NUMBER OF BALL ROWS :

Column : 6

Weight :

(g) : 4500

Boundary dimensions :

INSCRIBED CIRCLE DIAMETER dr :	60
Inscribed Circle DiameterTolerance :	0 -0.020
OUTER DIAMETERD :	90
Outer DiameterTolerance :	0 -0.025
Length L :	209
LENGTH TOLERANCE :	± 0.3
I :	18
Flange D1 :	134
Flange K :	106
Flange H :	18

Flange :	112
HOLE FOR ATTACHMENT d1 :	11
HOLE FOR ATTACHMENT d2 :	17.5
HOLE FOR ATTACHMENT h :	10.8
SOUAR- ENESS :	0.025
Eccentricity (MAX.) :	0.025
Basic Load Rating :	
C(kgf) :	770
Co(kgf) :	2040

介绍:

Model	Production standard	Shell			rolling ball		Retainer		Accessory (seal) material	
		Material	Hardness (HRC)	Surface treatment	Material	Hardness (HRC)	Material	Using temperature	Skeleton	Rubber
LMFP LUU	GB/T16940-2012	GCr15	60 ~ 64	-	GCr15	61 ~ 66	Resin	-20 ~ 80	65Mn	Nitrile rubber
LMFP LAUU	GB/T16940-2012	GCr15	60 ~ 64	Electroless nickel plating	GCr15	61 ~ 66	Resin	-20 ~ 80	65Mn	Nitrile rubber
LMFP LM	GB/T16940-2012	GCr15	60 ~ 64	-	GCr15	61 ~ 66	304 stainless steel	-20 ~ 150	65Mn	-
LMFP LAM	GB/T16940-2012	GCr15	60 ~ 64	Electroless nickel plating	GCr15	61 ~ 66	304 stainless steel	-20 ~ 150	65Mn	-