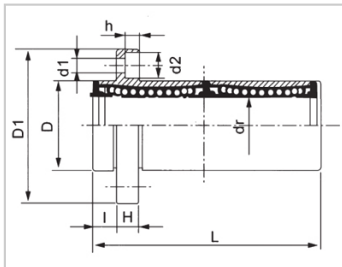
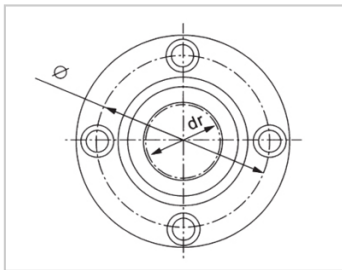
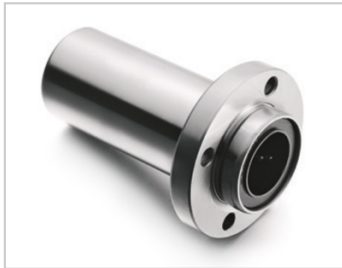


Linear flange bearing series

LMFP LAUU-LMFP8LAUULHIRWM8LML02-d8SMF8GWUU-E-SKLMFP8LUU-N

参数信息:



Model No. :

YTP (nickel plated) :	LMFP8LAUU
MISUMI (nickel plated) :	LHIRWM8
YHDA (nickel plated) :	LML02-d8
NB (nickel plated) :	SMF8GWUU-E-SK
SAMICK (nickel plating) :	LMFP8LUU-N

NUMBER OF BALL ROWS :

Column :	4
----------	---

Weight :

(g) :	51
-------	----

Boundary dimensions :

INSCRIBED CIRCLE DIAMETER dr :	8
Inscribed Circle DiameterTolerance :	0 -0.01
OUTER DIAMETERD :	15
Outer DiameterTolerance :	0 -0.013
Length L :	45
LENGTH TOLERANCE :	± 0.3
I :	5
Flange D1 :	32
Flange K :	25
Flange H :	5
Flange :	24

HOLE FOR ATTACHMENT d1 :	3.5
HOLE FOR ATTACHMENT d2 :	6
HOLE FOR ATTACHMENT h :	3.1
SOUAR- ENESS :	0.015
Eccentricity (MAX.) :	0.015
Basic Load Rating :	
C(kgf) :	44
Co(kgf) :	80

介绍:

Model	Production standard	Shell			rolling ball		Retainer		Accessory (seal) material	
		Material	Hardness (HRC)	Surface treatment	Material	Hardness (HRC)	Material	Using temperature	Skeleton	Rubber
LMFP LUU	GB/T16940-2012	GCr15	60 ~ 64	-	GCr15	61 ~ 66	Resin	-20 ~ 80	65Mn	Nitrile rubber
LMFP LAUU	GB/T16940-2012	GCr15	60 ~ 64	Electroless nickel plating	GCr15	61 ~ 66	Resin	-20 ~ 80	65Mn	Nitrile rubber
LMFP LM	GB/T16940-2012	GCr15	60 ~ 64	-	GCr15	61 ~ 66	304 stainless steel	-20 ~ 150	65Mn	-
LMFP LAM	GB/T16940-2012	GCr15	60 ~ 64	Electroless nickel plating	GCr15	61 ~ 66	304 stainless steel	-20 ~ 150	65Mn	-