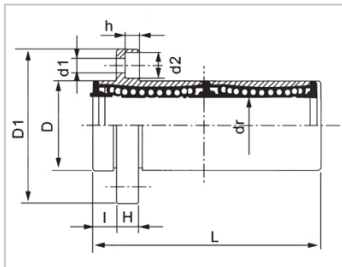
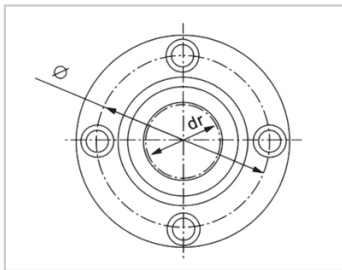


Linear flange bearing series

LMFP LAUU-LMFP12LAUULHIRWM12LML02-d12SMF12GWUU-E-SKLMFP12LUU-N

参数信息:



Model No. :

YTP (nickel plated) :	LMFP12L AUU
MISUMI (nickel plated) :	LHIRWM 12
YHDA (nickel plated) :	LML02-d1 2
NB (nickel plated) :	SMF12G WUU-E- SK
SAMICK (nickel plating) :	LMFP12L UU-N

NUMBER OF BALL ROWS :

Column :	4
----------	---

Weight :

(g) :	110
-------	-----

Boundary dimensions :

INSCRIBED CIRCLE DIAMETER dr :	12
Inscribed Circle DiameterTolerance :	0 -0.01
OUTER DIAMETERD :	21
Outer DiameterTolerance :	0 -0.016
Length L :	57
LENGTH TOLERANCE :	± 0.3
I :	6
Flange D1 :	42
Flange K :	32
Flange H :	6

Flange :	32
HOLE FOR ATTACHMENT d1 :	4.5
HOLE FOR ATTACHMENT d2 :	7.5
HOLE FOR ATTACHMENT h :	4.1
SOUAR- ENESS :	0.015
Eccentricity (MAX.) :	0.015
Basic Load Rating :	
C(kgf) :	83
Co(kgf) :	160

介绍:

Model	Production standard	Shell			rolling ball		Retainer		Accessory (seal) material	
		Material	Hardness (HRC)	Surface treatment	Material	Hardness (HRC)	Material	Using temperature	Skeleton	Rubber
LMFP LUU	GB/T16940-2012	GCr15	60 ~ 64	-	GCr15	61 ~ 66	Resin	-20 ~ 80	65Mn	Nitrile rubber
LMFP LAUU	GB/T16940-2012	GCr15	60 ~ 64	Electroless nickel plating	GCr15	61 ~ 66	Resin	-20 ~ 80	65Mn	Nitrile rubber
LMFP LM	GB/T16940-2012	GCr15	60 ~ 64	-	GCr15	61 ~ 66	304 stainless steel	-20 ~ 150	65Mn	-
LMFP LAM	GB/T16940-2012	GCr15	60 ~ 64	Electroless nickel plating	GCr15	61 ~ 66	304 stainless steel	-20 ~ 150	65Mn	-