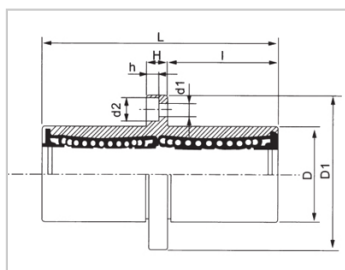
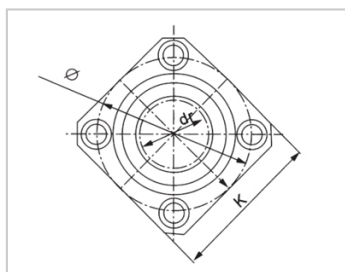


Linear flange bearing series

LMKC LM-LMKC50LMLHMSWF50

参数信息:



介绍:

Model	Production standard	Shell			rolling ball		Retainer		Accessory (seal) material	
		Material	Hardness (HRC)	Surface treatment	Material	Hardness (HRC)	Material	Using temperature	Skeleton	Rubber
LMKC LUU	GB/T16940-2012	GCr15	60 ~ 64	-	GCr15	61 ~ 66	Resin	-20 ~ 80	65Mn	Nitrile rubber
LMKC LAUU	GB/T16940-2012	GCr15	60 ~ 64	Electroless nickel plating	GCr15	61 ~ 66	Resin	-20 ~ 80	65Mn	Nitrile rubber
LMKC LM	GB/T16940-2012	GCr15	60 ~ 64	-	GCr15	61 ~ 66	304 stainless steel	-20 ~ 150	65Mn	-
LMKC LAM	GB/T16940-2012	GCr15	60 ~ 64	Electroless nickel	GCr15	61 ~ 66	304 stainless	-20 ~ 150	65Mn	-

---

				plating			steel			
--	--	--	--	---------	--	--	-------	--	--	--

Note: The inner diameter 6 retainer is made of carbon steel (08F) and the inner diameter 13 is not produced, and is for reference only.