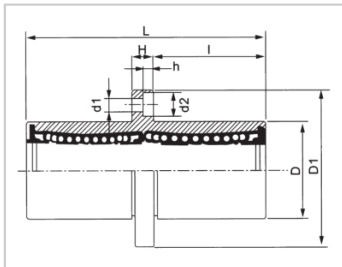
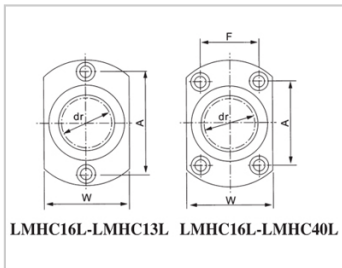


Linear flange bearing series

LMHC LAM-LMHC40LAM|LHMCWMF40

参数信息:



Model No. :

YTP (steel protection  
nickel plating) : LMHC40  
LAM

MISUMI (steel  
protection nickel  
plating) : LHMCW  
MF40

NUMBER OF BALL  
ROWS :

Column : 6

Weight :

(g) : 1410

Boundary  
dimensions :

INSCRIBED CIRCLE  
DIAMETER dr : 40

Inscribed Circle  
DiameterTolerance : 0 -0.015

OUTER  
DIAMETERD : 60

Outer  
DiameterTolerance : 0 -0.022

Length L : 151

LENGTH  
TOLERANCE : ± 0.3

l : 69

Flange D1 : 96

FLRNGE W : 66

Flange H : 13

FLRNGE A : 64

FLRNGE F : 45

HOLE FOR  
ATTACHMENT d1 : 9

HOLE FOR  
ATTACHMENT d2 : 14

HOLE FOR ATTACHMENT h :	8.1
SOUAR- ENESS :	0.025
Eccentricity (MAX.) :	0.025
Basic Load Rating :	
C(kgf) :	350
Co(kgf) :	820

介绍:

Model	Production standard	Shell			rolling ball		Retainer		Accessory (seal) material	
		Material	Hardness (HRC)	Surface treatment	Material	Hardness (HRC)	Material	Using temperature	Skeleton	Rubber
LMHC LUU	GB/T16940-2012	GCr15	60 ~ 64	-	GCr15	61 ~ 66	Resin	-20 ~ 80	65Mn	Nitrile rubber
LMHC LAUU	GB/T16940-2012	GCr15	60 ~ 64	Electroless nickel plating	GCr15	61 ~ 66	Resin	-20 ~ 80	65Mn	Nitrile rubber
LMHC LM	GB/T16940-2012	GCr15	60 ~ 64	-	GCr15	61 ~ 66	304 stainless steel	-20 ~ 150	65Mn	-
LMHC LAM	GB/T16940-2012	GCr15	60 ~ 64	Electroless nickel plating	GCr15	61 ~ 66	304 stainless steel	-20 ~ 150	65Mn	-

Note: The inner diameter 6 retainer is made of carbon steel (08F) and the inner diameter 13 is not produced, and is for reference only.