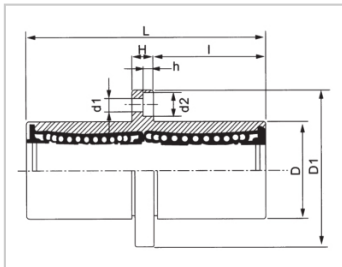
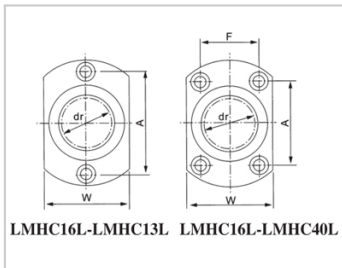


Linear flange bearing series

LMHC LAM-LMHC16LAM|LHMCWMF16

参数信息:



Model No. :

YTP (steel protection nickel plating) :	LMHC16 LAM
MISUMI (steel protection nickel plating) :	LHMCW MF16

NUMBER OF BALL ROWS :

Column : 5

Weight :

(g) : 182

Boundary dimensions :

INSCRIBED CIRCLE DIAMETER dr :	16
Inscribed Circle DiameterTolerance :	0 -0.010
OUTER DIAMETERD :	28
Outer DiameterTolerance :	0 -0.016
Length L :	70
LENGTH TOLERANCE :	± 0.3
I :	32
Flange D1 :	48
FLRNGE W :	34
Flange H :	6
FLRNGE A :	31
FLRNGE F :	22
HOLE FOR ATTACHMENT d1 :	4.5
HOLE FOR ATTACHMENT d2 :	7.5

HOLE FOR ATTACHMENT h :	4.1
SOUAR- ENESS :	0.015
Eccentricity (MAX.) :	0.015
Basic Load Rating :	
C(kgf) :	126
Co(kgf) :	240

介绍:

Model	Production standard	Shell			rolling ball		Retainer		Accessory (seal) material	
		Material	Hardness (HRC)	Surface treatment	Material	Hardness (HRC)	Material	Using temperature	Skeleton	Rubber
LMHC LUU	GB/T16940-2012	GCr15	60 ~ 64	-	GCr15	61 ~ 66	Resin	-20 ~ 80	65Mn	Nitrile rubber
LMHC LAUU	GB/T16940-2012	GCr15	60 ~ 64	Electroless nickel plating	GCr15	61 ~ 66	Resin	-20 ~ 80	65Mn	Nitrile rubber
LMHC LM	GB/T16940-2012	GCr15	60 ~ 64	-	GCr15	61 ~ 66	304 stainless steel	-20 ~ 150	65Mn	-
LMHC LAM	GB/T16940-2012	GCr15	60 ~ 64	Electroless nickel plating	GCr15	61 ~ 66	304 stainless steel	-20 ~ 150	65Mn	-

Note: The inner diameter 6 retainer is made of carbon steel (08F) and the inner diameter 13 is not produced, and is for reference only.