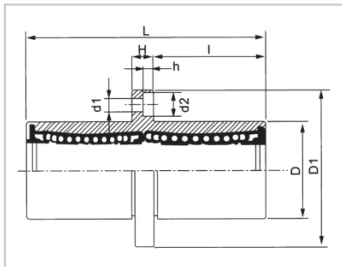
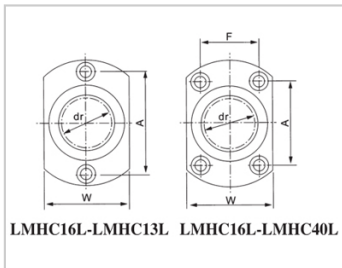


Linear flange bearing series

LMHC LAUU-LMHC12LAUULHMCWM12LMQ22-d12SMTTC12GUU-SKLMHM12UU-N

参数信息:



Model No. :

YTP (nickel plated) : LMHC12
LAUU

MISUMI (nickel plated) : LHMCW
M12

YHDA (nickel plated) : LMQ22-d
12

NB (nickel plated) : SMTTC12
GUU-SK

SAMICK (nickel plating) : LMHM12
UU-N

NUMBER OF BALL
ROWS :

Column : 4

Weight :

(g) : 102

Boundary
dimensions :

INSCRIBED CIRCLE
DIAMETER dr : 12

Inscribed Circle
DiameterTolerance : 0 -0.010

OUTER
DIAMETERD : 21

Outer
DiameterTolerance : 0 -0.016

Length L : 57

LENGTH
TOLERANCE : ± 0.3

I : 25.5

Flange D1 : 42

FLRNGE W : 27

Flange H : 6

FLRNGE A : 32

FLRNGE F :	
HOLE FOR ATTACHMENT d1 :	4.5
HOLE FOR ATTACHMENT d2 :	7.5
HOLE FOR ATTACHMENT h :	4.1
SOUAR- ENESS :	0.015
Eccentricity (MAX.) :	0.015
Basic Load Rating :	
C(kgf) :	83
Co(kgf) :	160

介绍:

Model	Production standard	Shell			rolling ball		Retainer		Accessory (seal) material	
		Material	Hardness (HRC)	Surface treatment	Material	Hardness (HRC)	Material	Using temperature	Skeleton	Rubber
LMHC LUU	GB/T16940-2012	GCr15	60 ~ 64	-	GCr15	61 ~ 66	Resin	-20 ~ 80	65Mn	Nitrile rubber
LMHC LAUU	GB/T16940-2012	GCr15	60 ~ 64	Electroless nickel plating	GCr15	61 ~ 66	Resin	-20 ~ 80	65Mn	Nitrile rubber
LMHC LM	GB/T16940-2012	GCr15	60 ~ 64	-	GCr15	61 ~ 66	304 stainless steel	-20 ~ 150	65Mn	-
LMHC LAM	GB/T16940-2012	GCr15	60 ~ 64	Electroless nickel plating	GCr15	61 ~ 66	304 stainless steel	-20 ~ 150	65Mn	-