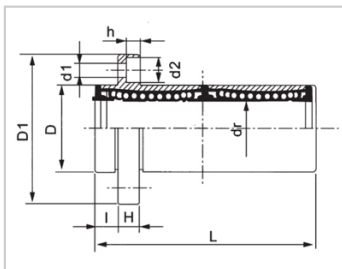
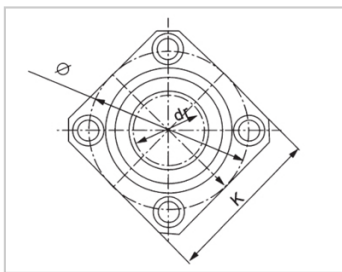


Medium Bearing Series

LMKP RAUU-LMKP8RAUULHISDM8LMK12-d8

参数信息:



Model No. :

YTP (nickel plated) :	LMKP8RAUU
MISUMI (nickel plated) :	LHISDM8
YHDA (nickel plated) :	LMK12-d8

NUMBER OF BALL ROWS :

Column :	4
----------	---

Boundary dimensions :

INSCRIBED CIRCLE DIAMETER _{dr} :	8
INSCRIBED CIRCLE DIAMETER TOLERANCE :	0-0.010
OUTER DIAMETER _D :	15
Outer Diameter Tolerance :	0-0.013
Length _L :	37
Length Tolerance :	± 0.3
I :	5
Flange _{D1} :	32
Flange _K :	25
Flange _H :	5
Flange :	24
HOLE FOR ATTACHMENT _{d1} :	3.5
HOLE FOR ATTACHMENT _{d2} :	6
HOLE FOR ATTACHMENT _h :	3.1

SOUAR- ENESS :	0.015
Eccentricity (MAX.) :	0.015
Basic Load Rating :	
C(kgf) :	31
Co(kgf) :	45.2
Weight :	
(g) :	39

介绍:

Model No.	Production Standards	Outer Coving			Balls		Retainer		Seals Material	
		Material	Hardness (HRC)	Treatment Of Surfaces	Material	Hardness (HRC)	Material	Holder Working Temperature	Skeleton	Rubber
LMKP RUU	GB/T16940-2012	GCr15	60 ~ 64	-	GCr15	61 ~ 66	Resin	-20 ~ 80	65Mn	Nitrile Rubber
LMKP RAUU	GB/T16940-2012	GCr15	60 ~ 64	Electroless Nickel Plating	GCr15	61 ~ 66	Resin	-20 ~ 80	65Mn	Nitrile Rubber