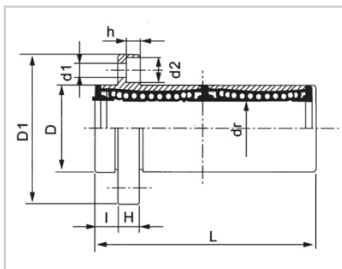
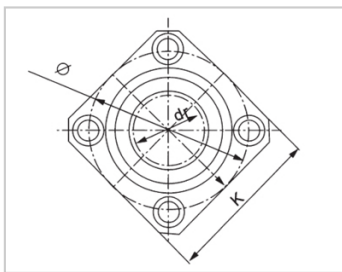


Medium Bearing Series

LMKP RAUU-LMKP25RAUULHISDM25LMK12-d25

参数信息:



Model No. :

| | |
|--------------------------|------------|
| YTP (nickel plated) : | LMKP25RAUU |
| MISUMI (nickel plated) : | LHISDM25 |
| YHDA (nickel plated) : | LMK12-d25 |

NUMBER OF BALL ROWS :

| | |
|----------|---|
| Column : | 6 |
|----------|---|

Boundary dimensions :

| | |
|---|---------|
| INSCRIBED CIRCLE DIAMETER _{dr} : | 25 |
| INSCRIBED CIRCLE DIAMETER TOLERANCE : | 0-0.012 |
| OUTER DIAMETER _D : | 40 |
| Outer Diameter Tolerance : | 0-0.019 |
| Length _L : | 83 |
| Length Tolerance : | ± 0.3 |
| I : | 8 |
| Flange _{D1} : | 62 |
| Flange _K : | 50 |
| Flange _H : | 8 |
| Flange : | 51 |
| HOLE FOR ATTACHMENT _{d1} : | 5.5 |
| HOLE FOR ATTACHMENT _{d2} : | 9 |
| HOLE FOR ATTACHMENT _h : | 5.1 |

| | |
|-----------------------|-------|
| SOUAR- ENESS : | 0.02 |
| Eccentricity (MAX.) : | 0.02 |
| Basic Load Rating : | |
| C(kgf) : | 172.5 |
| Co(kgf) : | 306.8 |
| Weight : | |
| (g) : | 440 |

介绍:

| Model No. | Production Standards | Outer Coving | | | Balls | | Retainer | | Seals Material | |
|-----------|----------------------|--------------|------------------|----------------------------|----------|------------------|----------|----------------------------|----------------|----------------|
| | | Material | Hardness (HRC) | Treatment Of Surfaces | Material | Hardness (HRC) | Material | Holder Working Temperature | Skeleton | Rubber |
| LMKP RUU | GB/T16940-2012 | GCr15 | 60 ~ 64 | - | GCr15 | 61 ~ 66 | Resin | -20 ~ 80 | 65Mn | Nitrile Rubber |
| LMKP RAUU | GB/T16940-2012 | GCr15 | 60 ~ 64 | Electroless Nickel Plating | GCr15 | 61 ~ 66 | Resin | -20 ~ 80 | 65Mn | Nitrile Rubber |