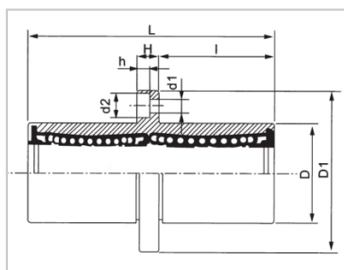
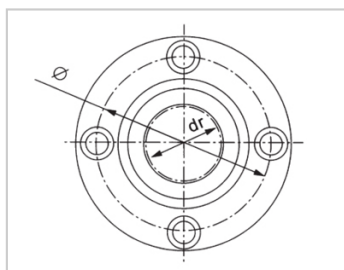


Medium Bearing Series

LMFC RAUU-LMFC12RAUULHMRDM12LMP02-d12

参数信息:



Model No. :

YTP (nickel plated) :	LMFC12RAUU
MISUMI (nickel plated) :	LHMRDM12
YHDA (nickel plated) :	LMP02-d12

NUMBER OF BALL ROWS :

Column :	4
----------	---

Boundary dimensions :

INSCRIBED CIRCLE DIAMETERdr :	12
INSCRIBED CIRCLE DIAMETER TOLERANCE :	0-0.010
OUTER DIAMETERD :	21
Outer DiameterTolerance :	0-0.016
LengthL :	47
LengthTolerance :	± 0.3
I :	20.5
FlangeD1 :	42
FlangeH :	6
Flange :	32
HOLE FOR ATTACHMENTd1 :	4.5
HOLE FOR ATTACHMENT d2 :	7.5
HOLE FOR ATTACHMENTH :	4.1
SOUAR- ENESS :	0.015

Eccentricity (MAX.) : 0.015

Basic Load Rating :

C(kgf) : 63.5

Co(kgf) : 81.5

Weight :

(g) : 89

介绍:

Model No.	Product on Stand ards	Outer Coving			Balls		Retainer		Seals Material	
		Material	Hardness ( HRC )	Treatmen t Of Surfaces	Material	Hardness ( HRC )	Material	Holder Working Temperat ure	Skeleton	Rubber
LMFC RUU	GB/T16 940-201 2	GCr15	60 ~ 64	-	GCr15	61 ~ 66	Resin	-20 ~ 80	65Mn	Nitrile Rubber
LMFC RAUU	GB/T16 940-201 2	GCr15	60 ~ 64	Electroles s Nickel Plating	GCr15	61 ~ 66	Resin	-20 ~ 80	65Mn	Nitrile Rubber