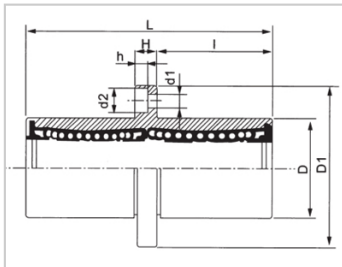
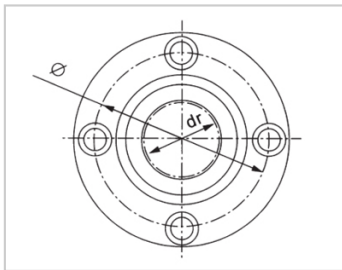
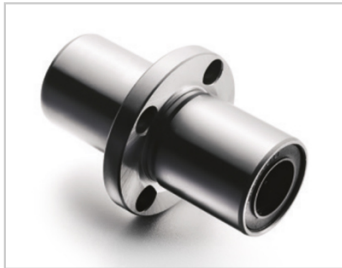


Medium Bearing Series

LMFC RAUU-LMFC30RAUULHMRDM30LMP02-d30

参数信息:



Model No. :

YTP (nickel plated) :	LMFC30RAUU
MISUMI (nickel plated) :	LHMRDM30
YHDA (nickel plated) :	LMP02-d30

NUMBER OF BALL ROWS :

Column :	6
----------	---

Boundary dimensions :

INSCRIBED CIRCLE DIAMETERdr :	30
INSCRIBED CIRCLE DIAMETER TOLERANCE :	0-0.012
OUTER DIAMETERD :	45
Outer DiameterTolerance :	0-0.019
LengthL :	90
LengthTolerance :	± 0.3
I :	40
FlangeD1 :	74
FlangeH :	10
Flange :	60
HOLE FOR ATTACHMENTd1 :	6.6
HOLE FOR ATTACHMENT d2 :	11
HOLE FOR ATTACHMENTH :	6.1
SOUAR- ENESS :	0.02

Eccentricity (MAX.) : 0.02

Basic Load Rating :

C(kgf) : 244

Co(kgf) : 397.5

Weight :

(g) : 560

介绍:

Model No.	Product on Stand ards	Outer Coving			Balls		Retainer		Seals Material	
		Material	Hardness (HRC)	Treatmen t Of Surfaces	Material	Hardness (HRC)	Material	Holder Working Temperat ure	Skeleton	Rubber
LMFC RUU	GB/T16 940-201 2	GCr15	60 ~ 64	-	GCr15	61 ~ 66	Resin	-20 ~ 80	65Mn	Nitrile Rubber
LMFC RAUU	GB/T16 940-201 2	GCr15	60 ~ 64	Electroles s Nickel Plating	GCr15	61 ~ 66	Resin	-20 ~ 80	65Mn	Nitrile Rubber