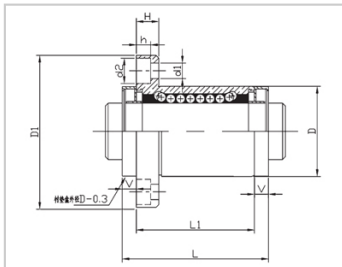
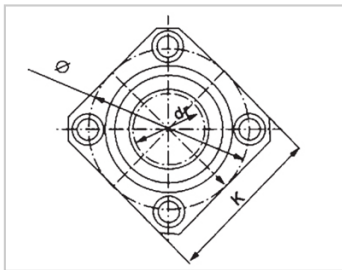
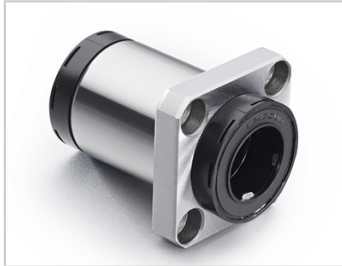


Self-lubricating bearing series

LMK AUU-MX-LMK16AUU-MXLHFSM-MX16MX-LME13-d16

参数信息:



Model No. :

YTP (nickel plated) :	LMK16A UU-MX
MISUMI (nickel plated) :	LHFSM- MX16
YHDA (nickel plated) :	MX-LME 13-d16

NUMBER OF BALL ROWS :

Column : 5

Boundary dimensions :

INSCRIBED CIRCLE DIAMETER _{dr} :	16
INSCRIBED CIRCLE DIAMETER TOLERANCE :	0 -0.009
OUTER DIAMETER _D :	28
Outer Diameter Tolerance :	0 -0.013
Length _L :	49
Length _{L1} :	37
Length Tolerance :	± 0.3
V :	6
Flange _{D1} :	48
Flange _K :	37
Flange _H :	6
Flange :	38
HOLE FOR ATTACHMENT _{d1} :	4.5
HOLE FOR ATTACHMENT _{d2} :	7.5
HOLE FOR :	4.1

ATTACHMENTh :

SOUAR- ENESS : 0.012

Eccentricity (MAX.) : 0.012

Basic Load Rating :

C(kgf) : 79

Co(kgf) : 120

Weight :

(g) : 111

介绍:

Model No.	Producti on Standards	Outer Coving			Balls		Retainer		Seals Material	
		Material	Hardness (HRC)	Treatmen t Of Surfaces	Material	Hardness (HRC)	Material	Holder Working Temperat ure	Skeleton	Rubber
LMK UU-MX	GB/T169 40-2012	GCr15	60 ~ 64	-	GCr15	61 ~ 66	Resin	-20 ~ 80	65Mn	Nitrile Rubber
LMK AUU-MX	GB/T169 40-2012	GCr15	60 ~ 64	Electroles s Nickel Plating	GCr15	61 ~ 66	Resin	-20 ~ 80	65Mn	Nitrile Rubber

Note: The apertures of 35, 40, and 50 are not produced and are for reference only.