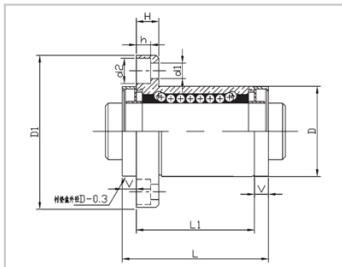
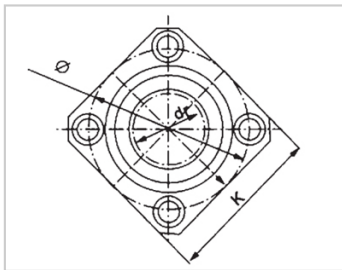
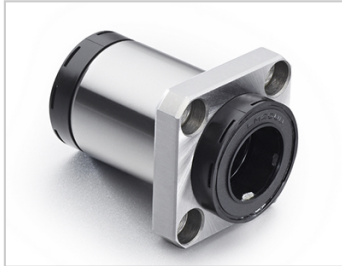


Self-lubricating bearing series

LMK AUU-MX-LMK35AUU-MXLHF5M-MX35MX-LME13-d35

参数信息:



Model No. :

| | |
|--------------------------|------------------|
| YTP (nickel plated) : | LMK35A UU-MX |
| MISUMI (nickel plated) : | LHF5M- MX35 |
| YHDA (nickel plated) : | MX-LME 13-d35 |

NUMBER OF BALL ROWS :

Column : 6

Boundary dimensions :

| | |
|---|-----------|
| INSCRIBED CIRCLE DIAMETER _{dr} : | 35 |
| INSCRIBED CIRCLE DIAMETER TOLERANCE : | -0 -0.012 |
| OUTER DIAMETER _D : | 52 |
| Outer Diameter Tolerance : | 0 -0.019 |
| Length _L : | 92 |
| Length _{L1} : | 70 |
| Length Tolerance : | ± 0.3 |
| V : | 11 |
| Flange _{D1} : | 82 |
| Flange _K : | 64 |
| Flange _H : | 10 |
| Flange : | 67 |
| HOLE FOR ATTACHMENT _{d1} : | 6.6 |
| HOLE FOR ATTACHMENT _{d2} : | 11 |
| HOLE FOR : | 6.1 |

ATTACHMENTh :

SOUAR- ENESS : 0.02

Eccentricity (MAX.) : 0.02

Basic Load Rating :

C(kgf) : 170

Co(kgf) : 320

Weight :

(g) : 588

介绍:

| Model No. | Production Standards | Outer Coving | | | Balls | | Retainer | | Seals Material | |
|------------|----------------------|--------------|------------------|----------------------------|----------|------------------|----------|----------------------------|----------------|----------------|
| | | Material | Hardness (HRC) | Treatment Of Surfaces | Material | Hardness (HRC) | Material | Holder Working Temperature | Skeleton | Rubber |
| LMK UU-MX | GB/T169 40-2012 | GCr15 | 60 ~ 64 | - | GCr15 | 61 ~ 66 | Resin | -20 ~ 80 | 65Mn | Nitrile Rubber |
| LMK AUU-MX | GB/T169 40-2012 | GCr15 | 60 ~ 64 | Electroless Nickel Plating | GCr15 | 61 ~ 66 | Resin | -20 ~ 80 | 65Mn | Nitrile Rubber |

Note: The apertures of 35, 40, and 50 are not produced and are for reference only.