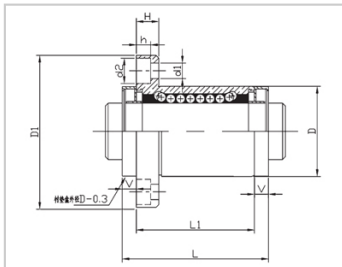
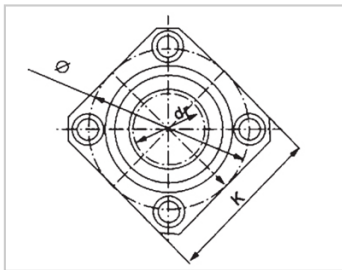
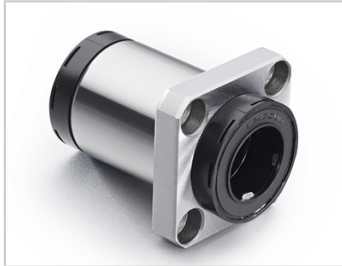


Self-lubricating bearing series

LMK AUU-MX-LMK40AUU-MXLHFSM-MX40MX-LME13-d40

参数信息:



Model No. :

YTP (nickel plated) :	LMK40A UU-MX
MISUMI (nickel plated) :	LHFSM- MX40
YHDA (nickel plated) :	MX-LME 13-d40

NUMBER OF BALL ROWS :

Column : 6

Boundary dimensions :

INSCRIBED CIRCLE DIAMETER _{dr} :	40
INSCRIBED CIRCLE DIAMETER TOLERANCE :	-0 -0.012
OUTER DIAMETER _D :	60
Outer Diameter Tolerance :	0 -0.019
Length _L :	104
Length _{L1} :	80
Length Tolerance :	± 0.3
V :	12
Flange _{D1} :	96
Flange _K :	75
Flange _H :	13
Flange :	78
HOLE FOR ATTACHMENT _{d1} :	9
HOLE FOR ATTACHMENT _{d2} :	14
HOLE FOR :	8.1

ATTACHMENTh :

SOUAR- ENESS : 0.02

Eccentricity (MAX.) : 0.02

Basic Load Rating :

C(kgf) : 220

Co(kgf) : 410

Weight :

(g) : 913

介绍:

Model No.	Producti on Standards	Outer Coving			Balls		Retainer		Seals Material	
		Material	Hardness (HRC)	Treatmen t Of Surfaces	Material	Hardness (HRC)	Material	Holder Working Temperature	Skeleton	Rubber
LMK UU-MX	GB/T169 40-2012	GCr15	60 ~ 64	-	GCr15	61 ~ 66	Resin	-20 ~ 80	65Mn	Nitrile Rubber
LMK AUU-MX	GB/T169 40-2012	GCr15	60 ~ 64	Electroles s Nickel Plating	GCr15	61 ~ 66	Resin	-20 ~ 80	65Mn	Nitrile Rubber

Note: The apertures of 35, 40, and 50 are not produced and are for reference only.