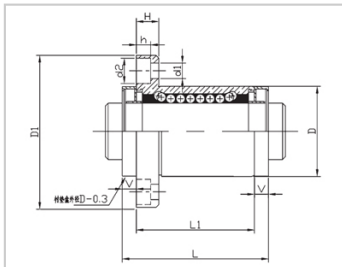
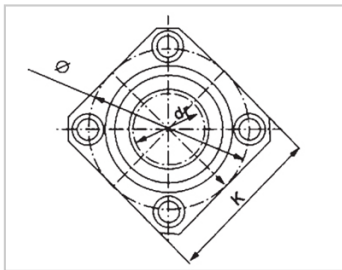
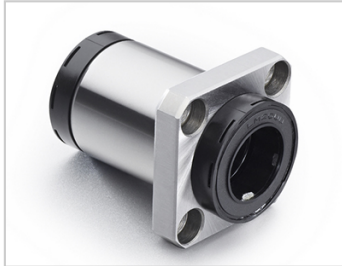


Self-lubricating bearing series

LMK AUU-MX-LMK50AUU-MXLHF5M-MX50MX-LME13-d50

参数信息:



Model No. :

YTP (nickel plated) :	LMK50A UU-MX
MISUMI (nickel plated) :	LHF5M- MX50
YHDA (nickel plated) :	MX-LME 13-d50

NUMBER OF BALL ROWS :

Column : 6

Boundary dimensions :

INSCRIBED CIRCLE DIAMETER <sub>dr</sub> :	50
INSCRIBED CIRCLE DIAMETER TOLERANCE :	-0 -0.012
OUTER DIAMETER <sub>D</sub> :	80
Outer Diameter Tolerance :	0 -0.019
Length <sub>L</sub> :	128
Length <sub>L1</sub> :	100
Length Tolerance :	± 0.3
V :	14
Flange <sub>D1</sub> :	116
Flange <sub>K</sub> :	92
Flange <sub>H</sub> :	13
Flange :	98
HOLE FOR ATTACHMENT <sub>d1</sub> :	9
HOLE FOR ATTACHMENT <sub>d2</sub> :	14
HOLE FOR :	8.1

ATTACHMENTh :

SOUAR- ENESS : 0.02

Eccentricity (MAX.) : 0.02

Basic Load Rating :

C(kgf) : 390

Co(kgf) : 810

Weight :

(g) : 2063

介绍:

Model No.	Production Standards	Outer Coving			Balls		Retainer		Seals Material	
		Material	Hardness ( HRC )	Treatment Of Surfaces	Material	Hardness ( HRC )	Material	Holder Working Temperature	Skeleton	Rubber
LMK UU-MX	GB/T169 40-2012	GCr15	60 ~ 64	-	GCr15	61 ~ 66	Resin	-20 ~ 80	65Mn	Nitrile Rubber
LMK AUU-MX	GB/T169 40-2012	GCr15	60 ~ 64	Electroless Nickel Plating	GCr15	61 ~ 66	Resin	-20 ~ 80	65Mn	Nitrile Rubber

Note: The apertures of 35, 40, and 50 are not produced and are for reference only.