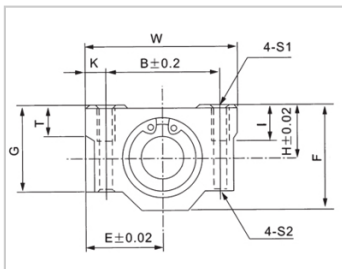
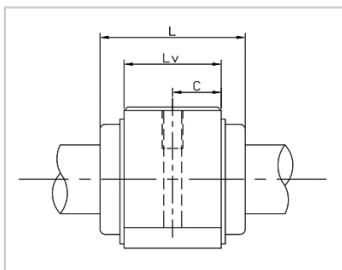


Linear motion ball bearing slide units

SC M-SC40M

参数信息:



Model No. :

YTP (Steel Protection) :	SC40M
Internal Bearings :	1*LM40M
Shaft diameter :	40

Boundary dimensions :

H :	40
E :	51
W :	102
L :	90
F :	78
G :	62
T :	20

Mounting dimensions :

B :	80
C :	60
K :	11
S1 :	M10
S2 :	8.7
I :	25

Weight :

(kg) :	1.59
--------	------

介绍:

Model No.	Production Standards	Internal Bearings	Outer Coving Material	Surface Treatment Of Shell		Holder Working Temperature
SC UU	GB/T16940-2012	1 * LM UU	6063 Aluminium Alloy	Natural Anodic Oxidation(conventional)	Black Anodic Oxidation (customized)	-20 ~ 80
SC M	GB/T16940-20	1 * LM M	6063	Natural Anodic	Black Anodic	-20 ~ 150

	12		Aluminium Alloy	Oxidation(conventional)	Oxidation (customized)	
--	----	--	-----------------	-------------------------	------------------------	--

Note: No production of steel protecting the inner diameter 13, for reference.