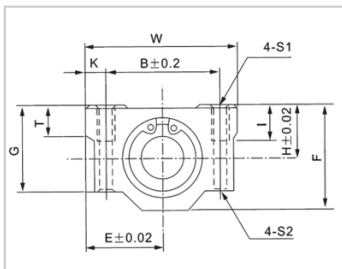
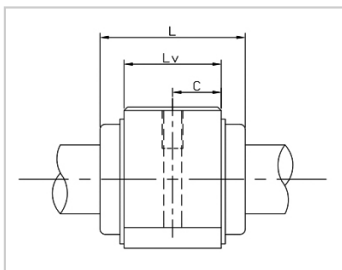


Linear motion ball bearing slide units

SC M-SC50M

参数信息:



Model No. :

YTP (Steel Protection) :	SC50M
Internal Bearings :	1*LM50M
Shaft diameter :	50

Boundary dimensions :

H :	52
E :	61
W :	122
L :	110
F :	102
G :	80
T :	25

Mounting dimensions :

B :	100
C :	80
K :	11
S1 :	M10
S2 :	8.7
I :	25

Weight :

(kg) :	3.34
--------	------

介绍:

Model No.	Production Standards	Internal Bearings	Outer Coving Material	Surface Treatment Of Shell		Holder Working Temperature
SC UU	GB/T16940-2012	1 * LM UU	6063 Aluminium Alloy	Natural Anodic Oxidation(conventional)	Black Anodic Oxidation (customized)	-20 ~ 80
SC M	GB/T16940-20	1 * LM M	6063	Natural Anodic	Black Anodic	-20 ~ 150

	12		Aluminium Alloy	Oxidation(conventional)	Oxidation (customized)	
--	----	--	-----------------	-------------------------	------------------------	--

Note: No production of steel protecting the inner diameter 13, for reference.