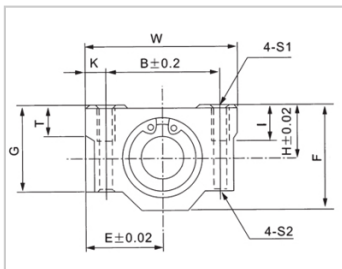
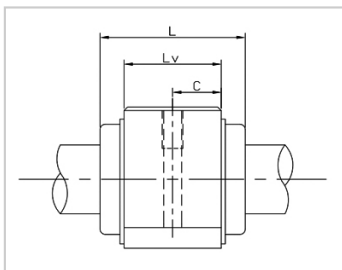


Linear motion ball bearing slide units

SC M-SC60M

参数信息:



Model No. :

YTP (Steel Protection) :	SC60M
Internal Bearings :	1*LM60M
Shaft diameter :	60

Boundary dimensions :

H :	58
E :	66
W :	132
L :	122
F :	114
G :	94
T :	30

Mounting dimensions :

B :	108
C :	90
K :	12
S1 :	M12
S2 :	10.7
I :	25

Weight :

(kg) :	4.72
--------	------

介绍:

Model No.	Production Standards	Internal Bearings	Outer Coving Material	Surface Treatment Of Shell		Holder Working Temperature
SC UU	GB/T16940-2012	1 * LM UU	6063 Aluminium Alloy	Natural Anodic Oxidation(conventional)	Black Anodic Oxidation (customized)	-20 ~ 80
SC M	GB/T16940-20	1 * LM M	6063	Natural Anodic	Black Anodic	-20 ~ 150

---

	12		Aluminium Alloy	Oxidation(conventional)	Oxidation (customized)	
--	----	--	-----------------	-------------------------	------------------------	--

Note: No production of steel protecting the inner diameter 13, for reference.