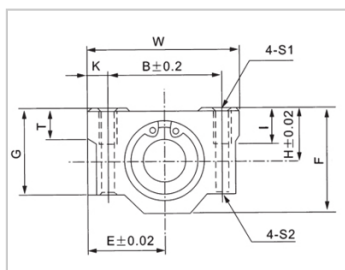
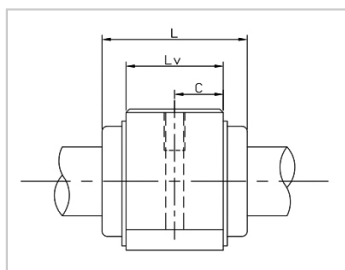


Linear motion ball bearing slide units

SC M-SC12M

参数信息:



Model No. :

YTP (Steel Protection) :	SC12M
Internal Bearings :	1*LM12M
Shaft diameter :	12

Boundary dimensions :

H :	15
E :	21
W :	42
L :	36
F :	28
G :	24
T :	8

Mounting dimensions :

B :	30.5
C :	26
K :	5.75
S1 :	M5
S2 :	4.3
I :	12

Weight :

(kg) :	0.102
--------	-------

介绍:

Model No.	Production Standards	Internal Bearings	Outer Coving Material	Surface Treatment Of Shell		Holder Working Temperature
SC UU	GB/T16940-2012	1 * LM UU	6063 Aluminium Alloy	Natural Anodic Oxidation(conventional)	Black Anodic Oxidation (customized)	-20 ~ 80
SC M	GB/T16940-20	1 * LM M	6063	Natural Anodic	Black Anodic	-20 ~ 150

---

	12		Aluminium Alloy	Oxidation(conventional)	Oxidation (customized)	
--	----	--	-----------------	-------------------------	------------------------	--

Note: No production of steel protecting the inner diameter 13, for reference.