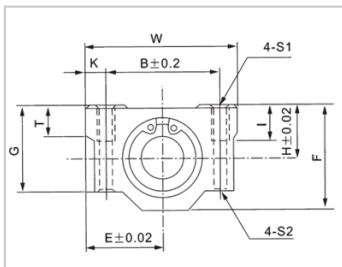
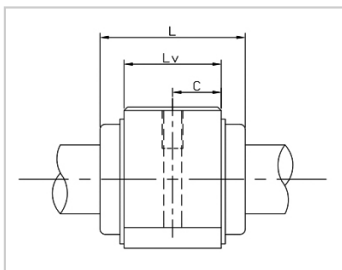


Linear motion ball bearing slide units

SC M-SC16M

参数信息:



Model No. :

YTP (Steel Protection) :	SC16M
Internal Bearings :	1*LM16M
Shaft diameter :	16

Boundary dimensions :

H :	19
E :	25
W :	50
L :	44
F :	38.5
G :	32.5
T :	9

Mounting dimensions :

B :	36
C :	34
K :	7
S1 :	M5
S2 :	4.3
I :	12

Weight :

(kg) :	0.2
--------	-----

介绍:

Model No.	Production Standards	Internal Bearings	Outer Coving Material	Surface Treatment Of Shell		Holder Working Temperature
SC UU	GB/T16940-2012	1 * LM UU	6063 Aluminium Alloy	Natural Anodic Oxidation(conventional)	Black Anodic Oxidation (customized)	-20 ~ 80
SC M	GB/T16940-20	1 * LM M	6063	Natural Anodic	Black Anodic	-20 ~ 150

	12		Aluminium Alloy	Oxidation(conventional)	Oxidation (customized)	
--	----	--	-----------------	-------------------------	------------------------	--

Note: No production of steel protecting the inner diameter 13, for reference.