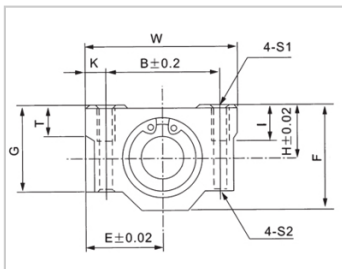
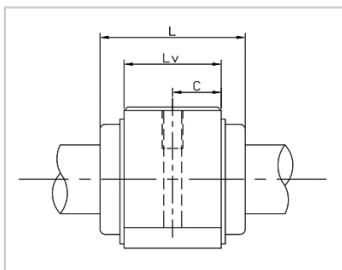


Linear motion ball bearing slide units

SC M-SC20M

参数信息:



Model No. :

YTP (Steel Protection) :	SC20M
Internal Bearings :	1*LM20M
Shaft diameter :	20

Boundary dimensions :

H :	21
E :	27
W :	54
L :	50
F :	41
G :	35
T :	11

Mounting dimensions :

B :	40
C :	40
K :	7
S1 :	M6
S2 :	5.2
I :	12

Weight :

(kg) :	0.255
--------	-------

介绍:

Model No.	Production Standards	Internal Bearings	Outer Coving Material	Surface Treatment Of Shell		Holder Working Temperature
SC UU	GB/T16940-2012	1 * LM UU	6063 Aluminium Alloy	Natural Anodic Oxidation(conventional)	Black Anodic Oxidation (customized)	-20 ~ 80
SC M	GB/T16940-20	1 * LM M	6063	Natural Anodic	Black Anodic	-20 ~ 150

	12		Aluminium Alloy	Oxidation(conventional)	Oxidation (customized)	
--	----	--	-----------------	-------------------------	------------------------	--

Note: No production of steel protecting the inner diameter 13, for reference.