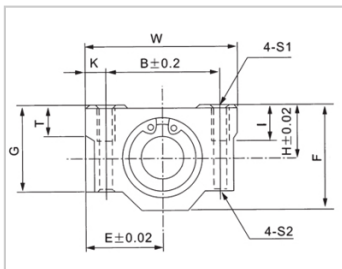
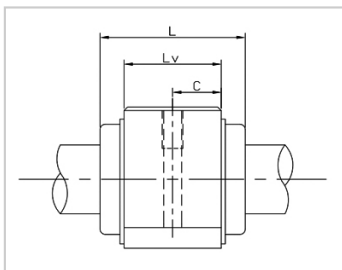


Linear motion ball bearing slide units

SC M-SC30M

参数信息:



Model No. :

YTP (Steel Protection) :	SC30M
Internal Bearings :	1*LM30M
Shaft diameter :	30

Boundary dimensions :

H :	30
E :	39
W :	78
L :	72
F :	59.5
G :	49
T :	15

Mounting dimensions :

B :	58
C :	58
K :	10
S1 :	M8
S2 :	7
I :	18

Weight :

(kg) :	0.735
--------	-------

介绍:

Model No.	Production Standards	Internal Bearings	Outer Coving Material	Surface Treatment Of Shell		Holder Working Temperature
SC UU	GB/T16940-2012	1 * LM UU	6063 Aluminium Alloy	Natural Anodic Oxidation(conventional)	Black Anodic Oxidation (customized)	-20 ~ 80
SC M	GB/T16940-20	1 * LM M	6063	Natural Anodic	Black Anodic	-20 ~ 150

---

	12		Aluminium Alloy	Oxidation(conventional)	Oxidation (customized)	
--	----	--	-----------------	-------------------------	------------------------	--

Note: No production of steel protecting the inner diameter 13, for reference.