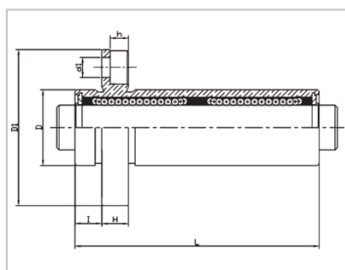
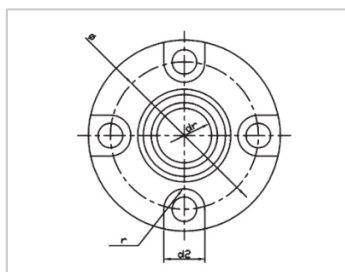


Compact bearing series

LMCFP LAUU-LMCFP6LAUULML53-d6

参数信息:



Model No. :

YTP (nickel plated) : LMCFP6L
AUU

YHDA (nickel plated) : LML53-d6

NUMBER OF BALL
ROWS :

Column : 6

Boundary
dimensions :

INSCRIBED CIRCLE
DIAMETER_{dr} : 6

INSCRIBED CIRCLE
DIAMETER
TOLERANCE : 0-0.010

OUTER
DIAMETER_D : 10

Outer
DiameterTolerance : 0-0.011

Length_L : 35

LengthTolerance : ± 0.3

I : 5

Flange_{D1} : 25

Flange_H : 5

Flange : 19

HOLE FOR
ATTACHMENT_{d1} : 3.5

HOLE FOR
ATTACHMENT_{d2} : 6

HOLE FOR
ATTACHMENT_H : 3.1

HOLE FOR
ATTACHMENT_r : 3

SOUAR- ENESS : 0.015

Eccentricity (MAX.) : 0.015

Basic Load Rating :

C(kgf) : 20.6

Co(kgf) : 30.9

Weight :

(g) : 24

介绍:

Model No.	Production Standards	Outer Coving			Balls		Retainer		Seals Material	
		Material	Hardness (HRC)	Treatment Of Surfaces	Material	Hardness (HRC)	Material	Holder Working Temperature	Skeleton	Rubber
LMCFP LUU	GB/T169 40-2012	GCr15	60 ~ 64	-	GCr15	61 ~ 66	Resin	-20 ~ 80	65Mn	Nitrile Rubber
LMCFP LAUU	GB/T169 40-2012	GCr15	60 ~ 64	Electroless Nickel Plating	GCr15	61 ~ 66	Resin	-20 ~ 80	65Mn	Nitrile Rubber

Note: Not produced, for reference only.