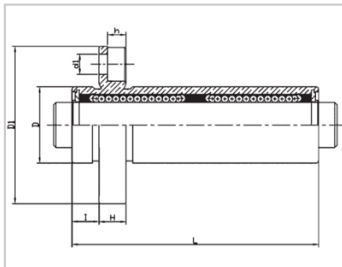
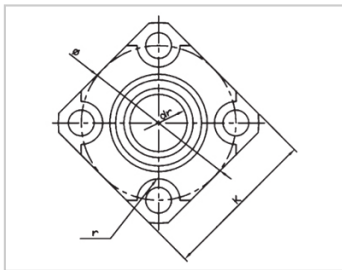


Compact bearing series

LMCKP LAUU-LMCKP10LAUULML63-d10

参数信息:



Model No. :

YTP (nickel plated) : LMCKP10LAUU

YHDA (nickel plated) : LML63-d10

NUMBER OF BALL ROWS :

Column : 6

Boundary dimensions :

INSCRIBED CIRCLE DIAMETER_{dr} : 10

INSCRIBED CIRCLE DIAMETER TOLERANCE : 0-0.010

OUTER DIAMETER_D : 17

Outer DiameterTolerance : 0-0.013

Length_L : 55

LengthTolerance : ± 0.3

I : 6

Flange_{D1} : 35

Flange_K : 27

Flange_H : 6

Flange : 27

HOLE FOR ATTACHMENT_{d1} : 4.5

HOLE FOR ATTACHMENT_{d2} : 7.5

HOLE FOR ATTACHMENT_h : 4.1

HOLE FOR ATTACHMENT_r : 3.75

SOUAR- ENESS :	0.015
Eccentricity (MAX.) :	0.015
Basic Load Rating :	
C(kgf) :	58.5
Co(kgf) :	86.7
Weight :	
(g) :	68

介绍:

Model No.	Producti on Standards	Outer Coving			Balls		Retainer		Seals Material	
		Material	Hardness (HRC)	Treatmen t Of Surfaces	Material	Hardness (HRC)	Material	Holder Working Temperature	Skeleton	Rubber
LMCKP LUU	GB/T169 40-2012	GCr15	60 ~ 64	-	GCr15	61 ~ 66	Resin	-20 ~ 80	65Mn	Nitrile Rubber
LMCKP LAUU	GB/T169 40-2012	GCr15	60 ~ 64	Electroles s Nickel Plating	GCr15	61 ~ 66	Resin	-20 ~ 80	65Mn	Nitrile Rubber

Note: Not produced, for reference only.