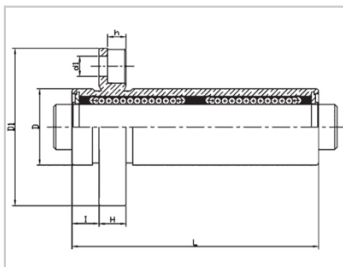
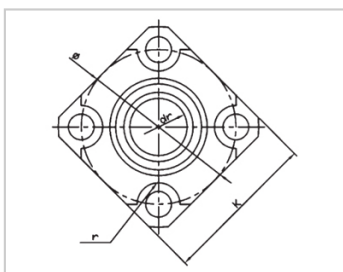


Compact bearing series

LMCKP LAUU-LMCKP16LAUULML63-d16

参数信息:



Model No. :

YTP (nickel plated) : LMCKP16LAUU

YHDA (nickel plated) : LML63-d16

NUMBER OF BALL ROWS :

Column : 6

Boundary dimensions :

INSCRIBED CIRCLE DIAMETER<sub>dr</sub> : 16

INSCRIBED CIRCLE DIAMETER TOLERANCE : 0-0.010

OUTER DIAMETER<sub>D</sub> : 26

Outer DiameterTolerance : 0-0.016

Length<sub>L</sub> : 70

LengthTolerance : ± 0.3

I : 6

Flange<sub>D1</sub> : 44

Flange<sub>K</sub> : 34

Flange<sub>H</sub> : 6

Flange : 36

HOLE FOR ATTACHMENT<sub>d1</sub> : 4.5

HOLE FOR ATTACHMENT<sub>d2</sub> : 7.5

HOLE FOR ATTACHMENT<sub>h</sub> : 4.1

HOLE FOR ATTACHMENT<sub>r</sub> : 3.75

SOUAR- ENESS :	0.015
Eccentricity (MAX.) :	0.015
Basic Load Rating :	
C(kgf) :	96.5
Co(kgf) :	143
Weight :	
(g) :	135

介绍:

Model No.	Producti on Standards	Outer Coving			Balls		Retainer		Seals Material	
		Material	Hardness ( HRC )	Treatmen t Of Surfaces	Material	Hardness ( HRC )	Material	Holder Working Temperature	Skeleton	Rubber
LMCKP LUU	GB/T169 40-2012	GCr15	60 ~ 64	-	GCr15	61 ~ 66	Resin	-20 ~ 80	65Mn	Nitrile Rubber
LMCKP LAUU	GB/T169 40-2012	GCr15	60 ~ 64	Electroles s Nickel Plating	GCr15	61 ~ 66	Resin	-20 ~ 80	65Mn	Nitrile Rubber

Note: Not produced, for reference only.