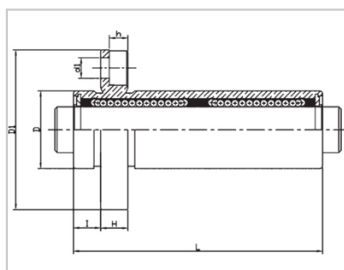
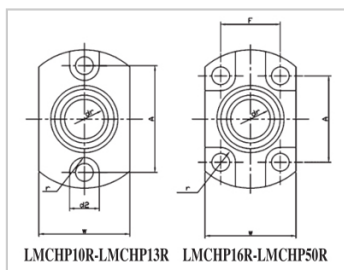


Compact bearing series

LMCHP LAUU-LMCHP10LAUULML73-d10

参数信息:



Model No. :

YTP (nickel plated) : LMCHP10LAUU

YHDA (nickel plated) : LML73-d10

NUMBER OF BALL ROWS :

Column : 6

Boundary dimensions :

INSCRIBED CIRCLE DIAMETER_{dr} : 10

INSCRIBED CIRCLE DIAMETER TOLERANCE : 0-0.010

OUTER DIAMETER_D : 17

Outer Diameter Tolerance : 0-0.013

Length_L : 55

Length Tolerance : ± 0.3

I : 6

Flange_{D1} : 35

Flange_W : 23

Flange_H : 6

Flange_A : 27

Flange_F : -

HOLE FOR ATTACHMENT_{d1} : 4.5

HOLE FOR ATTACHMENT_{d2} : 7.5

HOLE FOR ATTACHMENT_h : 4.1

HOLE FOR : 3.75

ATTACHMENTr :

SOUAR- ENESS : 0.015

Eccentricity (MAX.) : 0.015

Basic Load Rating :

C(kgf) : 58.5

Co(kgf) : 86.7

Weight :

(g) : 73

介绍:

Model No.	Producti on Standards	Outer Coving			Balls		Retainer		Seals Material	
		Material	Hardness (HRC)	Treatmen t Of Surfaces	Material	Hardness (HRC)	Material	Holder Working Temperature	Skeleton	Rubber
LMCHP LUU	GB/T169 40-2012	GCr15	60 ~ 64	-	GCr15	61 ~ 66	Resin	-20 ~ 80	65Mn	Nitrile Rubber
LMCHP LAUU	GB/T169 40-2012	GCr15	60 ~ 64	Electroles s Nickel Plating	GCr15	61 ~ 66	Resin	-20 ~ 80	65Mn	Nitrile Rubber

Note: Not produced, for reference only.